

Outfalls in question, field verified by Berkeley Township DPW	06/25/2021
REVISIONS	DATE



**General Notes and Data Sources:**

This Geographic Information System (GIS) Stormwater Outfall Mapping MS4 map is for demonstration purposes only, any use of this product with respect to accuracy and precision shall be the sole responsibility of the end user.

The areas, boundaries and details, shown on this map, are referenced, in part, from ground surveys, aerial surveys and recorded plans, tax assessment maps and as-built documents.

This map was created, in part, utilizing parcel, municipal boundary and location data provided by the Township of Berkeley. Stormwater assets, such as inlets, culverts, cleanouts, etc. were provided by the Township of Berkeley. Outfall locations verified by Berkeley Township Department of Public Works. Outfall locations were GPS field collected by Remington & Vernick Engineers utilizing the Trimble Geo-7X unit unless noted otherwise.

Additional GIS resource data and imagery data was provided by the New Jersey Geographic Information Network. The (NJGIN) data was obtained and provided by the New Jersey Geographic Information Network (NJGIN): [https://njgin.state.nj.us/NJ\\_NJGINexplorer/index.jsp](https://njgin.state.nj.us/NJ_NJGINexplorer/index.jsp). This secondary product has not been verified by (NJGIN) and is not state-authorized.

Additional cadastral feature mapping data, such as, waterways, roadways, railroads, aerial orthophotography, etc. was obtained from the New Jersey Department of Environmental Protection (NJDEP). The New Jersey Department of Environmental Protection (NJDEP) data was obtained and provided by the New Jersey Department of Environmental Protection: <http://www.state.nj.us/dep/gis/>. This secondary product has not been verified by (NJDEP) and is not state-authorized.

All positions are based on the following:

- NAD 83 (horizontal datum)
- New Jersey State Plane Coordinate System
- English units (feet)

The geodetic accuracy and precision of the Geographic Information System (GIS) data contained in this mapping has not been developed nor verified by a professional licensed land surveyor and shall not be nor is intended to be used in matters requiring delineation and location of true ground horizontal and/or vertical controls, unless otherwise noted.



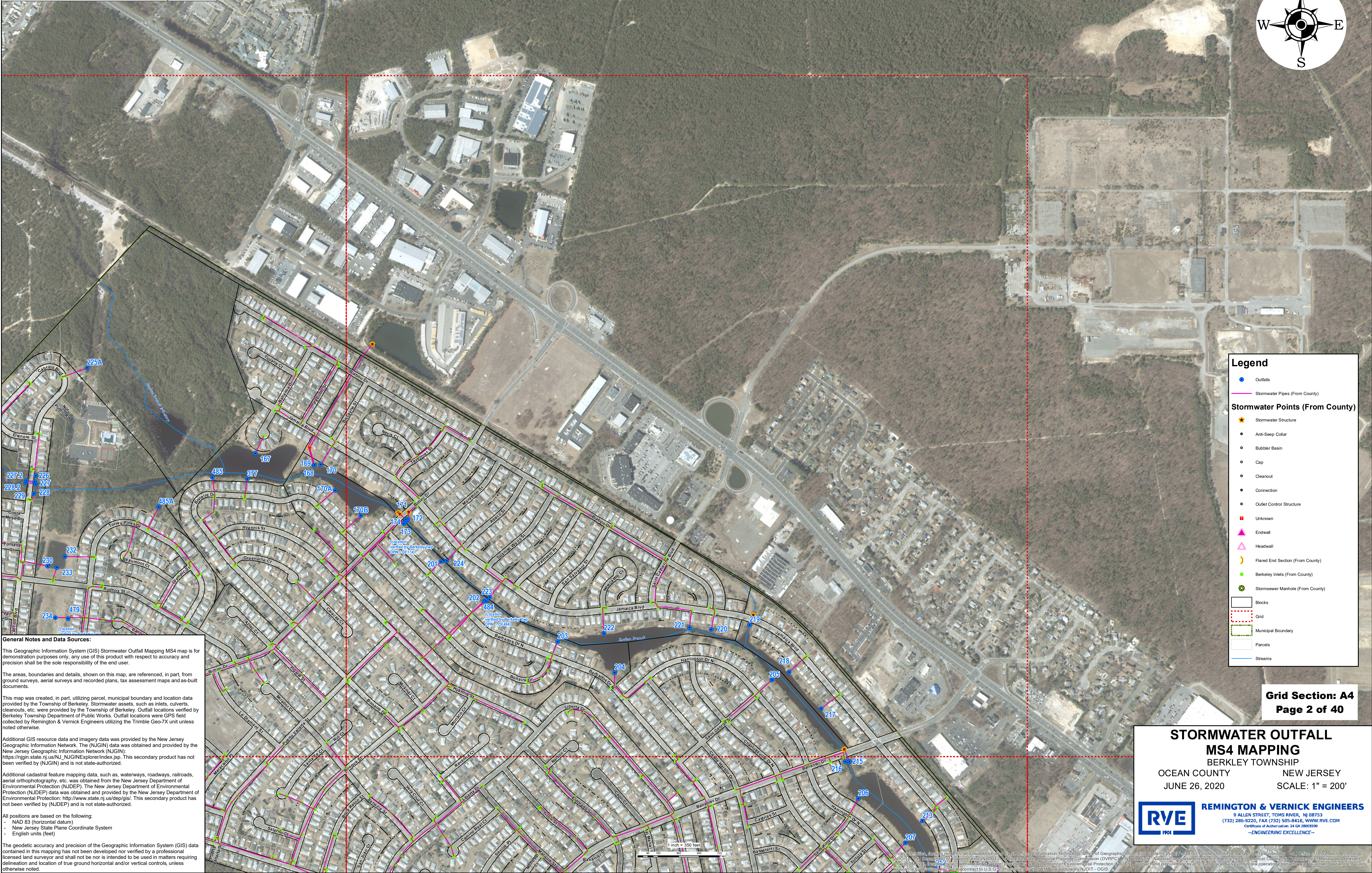
**REMINGTON & VERNICK ENGINEERS**  
9 ALLEN STREET, TOMS RIVER, NJ 08753  
(732) 286-9220, FAX (732) 505-8416, [WWW.RVE.COM](http://WWW.RVE.COM)  
Certification of Accreditation: 24 CA 38003500  
-ENGINEERING EXCELLENCE-

**STORMWATER OUTFALL  
MS4 MAPPING**  
BERKELEY TOWNSHIP  
OCEAN COUNTY NEW JERSEY  
JUNE 26, 2020 SCALE: 1" = 200'

**Grid Section: A3  
Page 1 of 40**



Outfalls in question, field verified by Berkeley Township DPW	06/25/2021
REVISIONS	DATE



**General Notes and Data Sources:**

This Geographic Information System (GIS) Stormwater Outfall Mapping MS4 map is for demonstration purposes only, any use of this product with respect to accuracy and precision shall be the sole responsibility of the end user.

The areas, boundaries and details, shown on this map, are referenced, in part, from ground surveys, aerial surveys and recorded plans, tax assessment maps and as-built documents.

This map was created, in part, utilizing parcel, municipal boundary and location data provided by the Township of Berkeley. Stormwater assets, such as inlets, culverts, cleanouts, etc. were provided by the Township of Berkeley. Outfall locations verified by Berkeley Township Department of Public Works. Outfall locations were GPS field collected by Remington & Vernick Engineers utilizing the Trimble Geo-7X unit unless noted otherwise.

Additional GIS resource data and imagery data was provided by the New Jersey Geographic Information Network. The (NJGIN) data was obtained and provided by the New Jersey Geographic Information Network (NJGIN): [https://njgin.state.nj.us/NJ\\_NJGINExplorer/index.jsp](https://njgin.state.nj.us/NJ_NJGINExplorer/index.jsp). This secondary product has not been verified by (NJGIN) and is not state-authorized.

Additional cadastral feature mapping data, such as, waterways, roadways, railroads, aerial orthophotography, etc. was obtained from the New Jersey Department of Environmental Protection (NJDEP). The New Jersey Department of Environmental Protection (NJDEP) data was obtained and provided by the New Jersey Department of Environmental Protection: <http://www.state.nj.us/dep/gis/>. This secondary product has not been verified by (NJDEP) and is not state-authorized.

All positions are based on the following:

- NAD 83 (horizontal datum)
- New Jersey State Plane Coordinate System
- English units (feet)

The geodetic accuracy and precision of the Geographic Information System (GIS) data contained in this mapping has not been developed nor verified by a professional licensed land surveyor and shall not be nor is intended to be used in matters requiring delineation and location of true ground horizontal and/or vertical controls, unless otherwise noted.

**Legend**

Outfalls

Stormwater Pipes (From County)

Stormwater Points (From County)

Stormwater Structure

Anti-Seep Collar

Bubbler Basin

Cap

Cleanout

Connection

Outlet Control Structure

Unknown

Endwall

Headwall

Flared End Section (From County)

Berkeley Inlets (From County)

Stormsewer Manhole (From County)

Blocks

Grid

Municipal Boundary

Parcels

Streams

**Grid Section: A4**  
**Page 2 of 40**

**STORMWATER OUTFALL**

**MS4 MAPPING**

**BERKELEY TOWNSHIP**

**OCEAN COUNTY**

**JUNE 26, 2020**

**NEW JERSEY**

**SCALE: 1" = 200'**

**RVE**

1901

**REMINGTON & VERNICK ENGINEERS**

9 ALLEN STREET, TOMS RIVER, NJ 08753

(732) 286-9220, FAX (732) 505-8436, [WWW.RVE.COM](http://WWW.RVE.COM)

CERTIFICATE OF AUTHORIZATION: 24 CA 38003500

**-ENGINEERING EXCELLENCE-**







Outfalls in question, field verified by Berkeley Township DPW	06/25/2021
REVISIONS	DATE



**General Notes and Data Sources:**

This Geographic Information System (GIS) Stormwater Outfall Mapping MS4 map is for demonstration purposes only, any use of this product with respect to accuracy and precision shall be the sole responsibility of the end user.

The areas, boundaries and details, shown on this map, are referenced, in part, from ground surveys, aerial surveys and recorded plans, tax assessment maps and as-built documents.

This map was created, in part, utilizing parcel, municipal boundary and location data provided by the Township of Berkeley, Stormwater assets, such as inlets, culverts, cleanouts, etc. were provided by the Township of Berkeley. Outfall locations verified by Berkeley Township Department of Public Works. Outfall locations were GPS field collected by Remington & Vernick Engineers utilizing the Trimble Geo-7X unit unless noted otherwise.

Additional GIS resource data and imagery data was provided by the New Jersey Geographic Information Network. The (NJGIN) data was obtained and provided by the New Jersey Geographic Information Network (NJGIN): [https://nigin.state.nj.us/NJ\\_NJGINexplorer/index.jsp](https://nigin.state.nj.us/NJ_NJGINexplorer/index.jsp). This secondary product has not been verified by (NJGIN) and is not state-authorized.

Additional cadastral feature mapping data, such as, waterways, roadways, railroads, aerial orthophotography, etc. was obtained from the New Jersey Department of Environmental Protection (NJDEP). The New Jersey Department of Environmental Protection (NJDEP) data was obtained and provided by the New Jersey Department of Environmental Protection: <http://www.state.nj.us/dep/gis/>. This secondary product has not been verified by (NJDEP) and is not state-authorized.

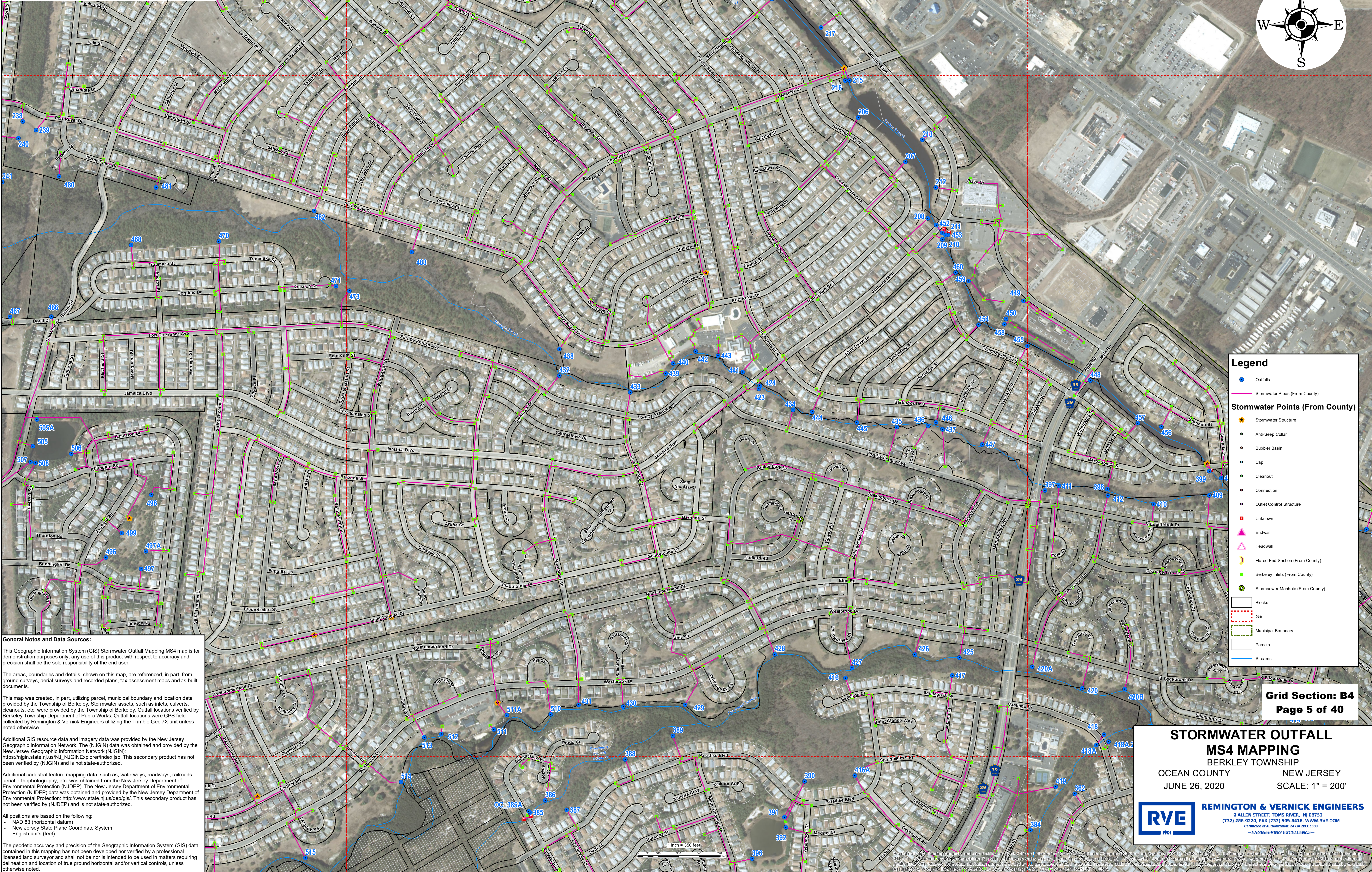
All positions are based on the following:

- NAD 83 (horizontal datum)
- New Jersey State Plane Coordinate System
- English units (feet)

The geodetic accuracy and precision of the Geographic Information System (GIS) data contained in this mapping has not been developed nor verified by a professional licensed land surveyor and shall not be nor is intended to be used in matters requiring delineation and location of true ground horizontal and/or vertical controls, unless otherwise noted.

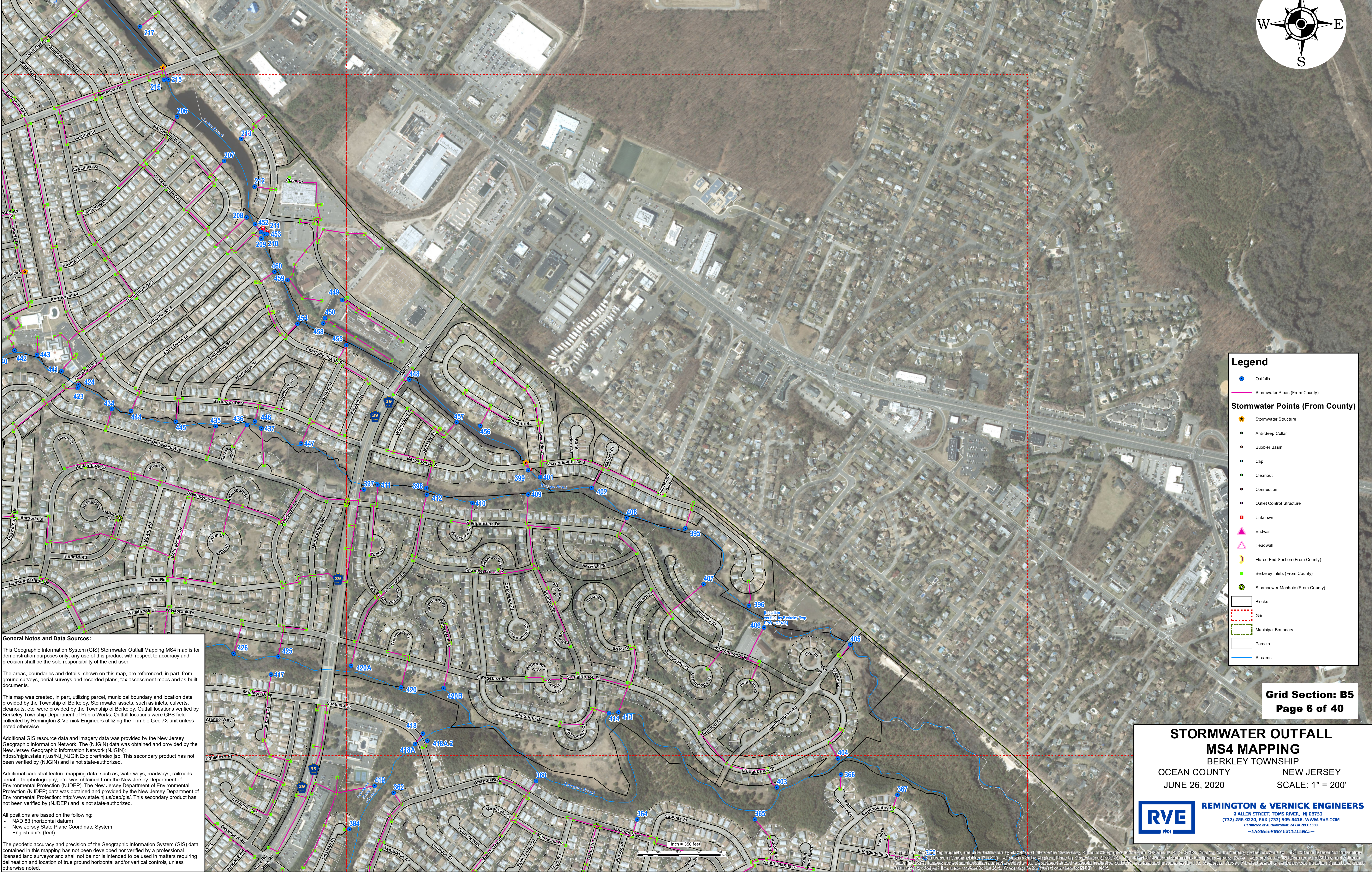


Outfalls in question, field verified by Berkeley Township DPW	06/25/2021
REVISIONS	DATE





Outfalls in question, field verified by Berkeley Township DPW	06/25/2021
REVISIONS	DATE



**General Notes and Data Sources:**

This Geographic Information System (GIS) Stormwater Outfall Mapping MS4 map is for demonstration purposes only, any use of this product with respect to accuracy and precision shall be the sole responsibility of the end user.

The areas, boundaries and details, shown on this map, are referenced, in part, from ground surveys, aerial surveys and recorded plans, tax assessment maps and as-built documents.

This map was created, in part, utilizing parcel, municipal boundary and location data provided by the Township of Berkeley. Stormwater assets, such as inlets, culverts, cleanouts, etc. were provided by the Township of Berkeley. Outfall locations verified by Berkeley Township Department of Public Works. Outfall locations were GPS field collected by Remington & Vernick Engineers utilizing the Trimble Geo-7X unit unless noted otherwise.

Additional GIS resource data and imagery data was provided by the New Jersey Geographic Information Network. The (NJGIN) data was obtained and provided by the New Jersey Geographic Information Network (NJGIN): [https://njin.state.nj.us/NJ\\_NJGINexplorer/index.jsp](https://njin.state.nj.us/NJ_NJGINexplorer/index.jsp). This secondary product has not been verified by (NJGIN) and is not state-authorized.

Additional cadastral feature mapping data, such as, waterways, roadways, railroads, aerial orthophotography, etc. was obtained from the New Jersey Department of Environmental Protection (NJDEP). The New Jersey Department of Environmental Protection (NJDEP) data was obtained and provided by the New Jersey Department of Environmental Protection: <http://www.state.nj.us/dep/gis/>. This secondary product has not been verified by (NJDEP) and is not state-authorized.

All positions are based on the following:

- NAD 83 (horizontal datum)
- New Jersey State Plane Coordinate System
- English units (feet)

The geodetic accuracy and precision of the Geographic Information System (GIS) data contained in this mapping has not been developed nor verified by a professional licensed land surveyor and shall not be nor is intended to be used in matters requiring delineation and location of true ground horizontal and/or vertical controls, unless otherwise noted.

**Legend**

- Outfalls
  - Stormwater Pipes (From County)
- Stormwater Points (From County)**
- ★ Stormwater Structure
    - Anti-Sleep Collar
    - Bubbler Basin
    - Cap
    - Cleanout
    - Connection
    - Outlet Control Structure
  - Unknown
  - ▲ Endwall
  - △ Headwall
  - ☾ Flared End Section (From County)
  - Berkeley Inlets (From County)
  - Stormsewer Manhole (From County)
- Blocks
- Grid
- Municipal Boundary
- Parcels
- Streams

**Grid Section: B5**  
**Page 6 of 40**

**STORMWATER OUTFALL  
MS4 MAPPING**

**BERKELEY TOWNSHIP**  
OCEAN COUNTY NEW JERSEY  
JUNE 26, 2020 SCALE: 1" = 200'



**REMINGTON & VERNICK ENGINEERS**  
9 ALLEN STREET, TOMS RIVER, NJ 08753  
(732) 286-9220, FAX (732) 505-8436, WWW.RVE.COM  
Certification of Authorization: 24 CA 3800390  
—ENGINEERING EXCELLENCE—



Outfalls in question, field verified by Berkeley Township DPW	06/25/2021
REVISIONS	DATE



**General Notes and Data Sources:**

This Geographic Information System (GIS) Stormwater Outfall Mapping MS4 map is for demonstration purposes only, any use of this product with respect to accuracy and precision shall be the sole responsibility of the end user.

The areas, boundaries and details, shown on this map, are referenced, in part, from ground surveys, aerial surveys and recorded plans, tax assessment maps and as-built documents.

This map was created, in part, utilizing parcel, municipal boundary and location data provided by the Township of Berkeley. Stormwater assets, such as inlets, culverts, cleanouts, etc. were provided by the Township of Berkeley. Outfall locations verified by Berkeley Township Department of Public Works. Outfall locations were GPS field collected by Remington & Vernick Engineers utilizing the Trimble Geo-7X unit unless noted otherwise.

Additional GIS resource data and imagery data was provided by the New Jersey Geographic Information Network. The (NJGIN) data was obtained and provided by the New Jersey Geographic Information Network (NJGIN): [https://njin.state.nj.us/NJ\\_NJGINExplorer/index.jsp](https://njin.state.nj.us/NJ_NJGINExplorer/index.jsp). This secondary product has not been verified by (NJGIN) and is not state-authorized.

Additional cadastral feature mapping data, such as, waterways, roadways, railroads, aerial orthophotography, etc. was obtained from the New Jersey Department of Environmental Protection (NJDEP). The New Jersey Department of Environmental Protection (NJDEP) data was obtained and provided by the New Jersey Department of Environmental Protection: <http://www.state.nj.us/dep/gis/>. This secondary product has not been verified by (NJDEP) and is not state-authorized.

All positions are based on the following:

- NAD 83 (horizontal datum)
- New Jersey State Plane Coordinate System
- English units (feet)

The geodetic accuracy and precision of the Geographic Information System (GIS) data contained in this mapping has not been developed nor verified by a professional licensed land surveyor and shall not be nor is intended to be used in matters requiring delineation and location of true ground horizontal and/or vertical controls, unless otherwise noted.

**Legend**

Outfalls

Stormwater Pipes (From County)

**Stormwater Points (From County)**

Stormwater Structure

Anti-Seep Collar

Bubbler Basin

Cap

Cleanout

Connection

Outlet Control Structure

Unknown

Endwall

Headwall

Flared End Section (From County)

Berkeley Inlets (From County)

Stormsewer Manhole (From County)

Blocks

Grid

Municipal Boundary

Parcels

Streams

**Grid Section: C2**  
**Page 7 of 40**

**STORMWATER OUTFALL**  
**MS4 MAPPING**  
BERKELEY TOWNSHIP  
OCEAN COUNTY  
JUNE 26, 2020

NEW JERSEY

SCALE: 1" = 200'

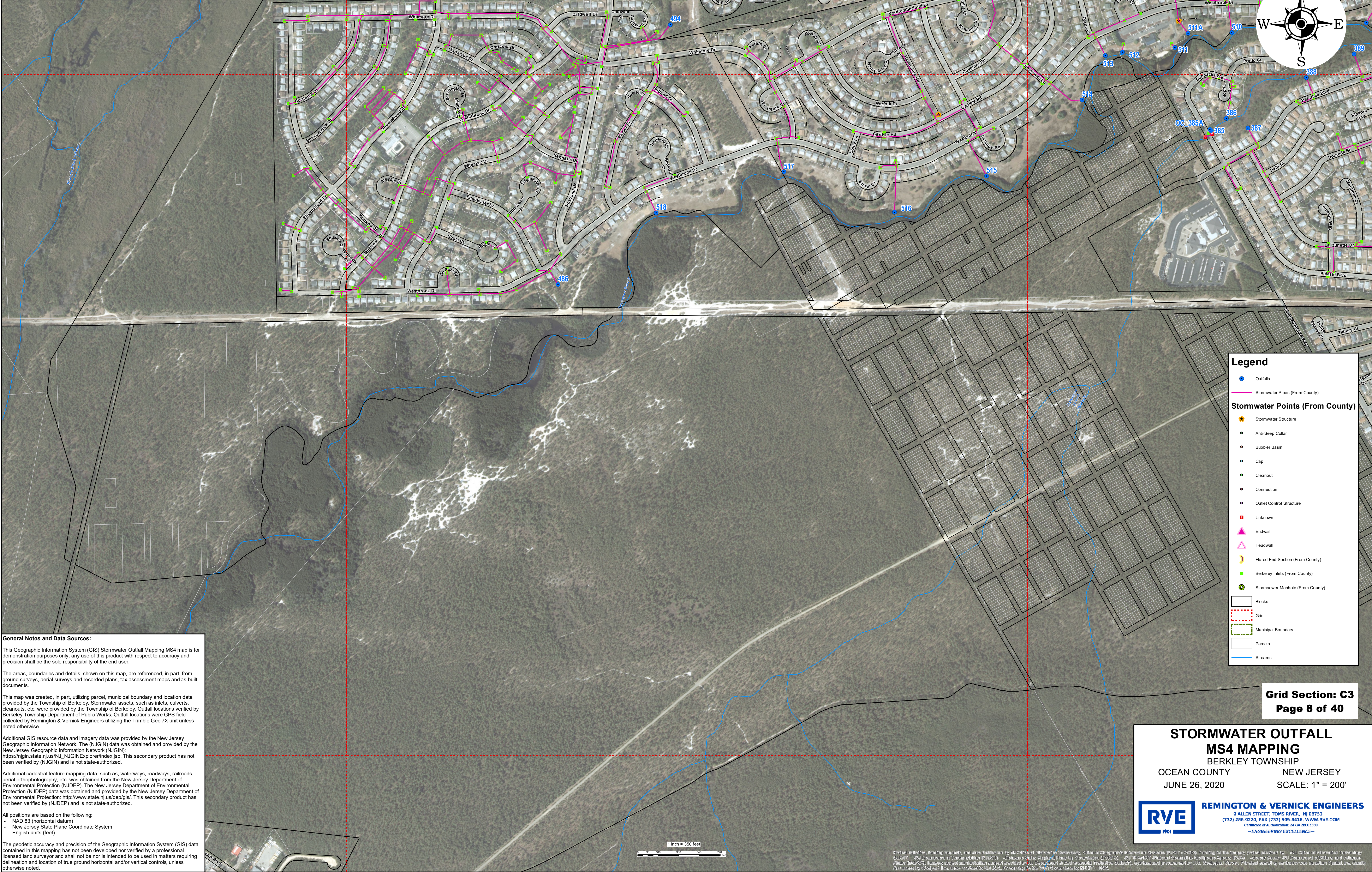
**RVE**  
1901

**REMINGTON & VERNICK ENGINEERS**  
9 ALLEN STREET, TOMS RIVER, NJ 08753  
(732) 286-9220, FAX (732) 505-8416, [WWW.RVE.COM](http://WWW.RVE.COM)  
Certificate of Authorization: 24 CA 3000390  
-ENGINEERING EXCELLENCE-

Printed On: October 21, 2021 Document Path: P:\GIS Projects\NJ\Ocean County\Berkeley Township\1506709910.5\_Berkeley\_Stormwater\_Outfall\_Mapping\_MS4.mxd



Outfalls in question, field verified by Berkeley Township DPW	06/25/2021
REVISIONS	DATE



**General Notes and Data Sources:**

This Geographic Information System (GIS) Stormwater Outfall Mapping MS4 map is for demonstration purposes only, any use of this product with respect to accuracy and precision shall be the sole responsibility of the end user.

The areas, boundaries and details, shown on this map, are referenced, in part, from ground surveys, aerial surveys and recorded plans, tax assessment maps and as-built documents.

This map was created, in part, utilizing parcel, municipal boundary and location data provided by the Township of Berkeley. Stormwater assets, such as inlets, culverts, cleanouts, etc. were provided by the Township of Berkeley. Outfall locations verified by Berkeley Township Department of Public Works. Outfall locations were GPS field collected by Remington & Vernick Engineers utilizing the Trimble Geo-7X unit unless noted otherwise.

Additional GIS resource data and imagery data was provided by the New Jersey Geographic Information Network. The (NJGIN) data was obtained and provided by the New Jersey Geographic Information Network (NJGIN): [https://njin.state.nj.us/NJ\\_NJGINExplorer/index.jsp](https://njin.state.nj.us/NJ_NJGINExplorer/index.jsp). This secondary product has not been verified by (NJGIN) and is not state-authorized.

Additional cadastral feature mapping data, such as, waterways, roadways, railroads, aerial orthophotography, etc. was obtained from the New Jersey Department of Environmental Protection (NJDEP). The New Jersey Department of Environmental Protection (NJDEP) data was obtained and provided by the New Jersey Department of Environmental Protection: <http://www.state.nj.us/dep/gis/>. This secondary product has not been verified by (NJDEP) and is not state-authorized.

All positions are based on the following:

- NAD 83 (horizontal datum)
- New Jersey State Plane Coordinate System
- English units (feet)

The geodetic accuracy and precision of the Geographic Information System (GIS) data contained in this mapping has not been developed nor verified by a professional licensed land surveyor and shall not be nor is intended to be used in matters requiring delineation and location of true ground horizontal and/or vertical controls, unless otherwise noted.

**Legend**

- Outfalls
- Stormwater Pipes (From County)

**Stormwater Points (From County)**

- ★ Stormwater Structure
  - Anti-Seep Collar
  - Bubbler Basin
  - Cap
  - Cleanout
  - Connection
  - Outlet Control Structure
- Unknown
- ▲ Endwall
- △ Headwall
- ☾ Flared End Section (From County)
- Berkeley Inlets (From County)
- Stormsewer Manhole (From County)

□ Blocks

□ Grid

□ Municipal Boundary

□ Parcels

— Streams

**Grid Section: C3**  
**Page 8 of 40**

**STORMWATER OUTFALL  
MS4 MAPPING**

BERKELEY TOWNSHIP

OCEAN COUNTY NEW JERSEY

JUNE 26, 2020 SCALE: 1" = 200'

**REMINGTON & VERNICK ENGINEERS**

9 ALLEN STREET, TOMS RIVER, NJ 08753  
(732) 286-9220, FAX (732) 505-8416, [WWW.RVE.COM](http://WWW.RVE.COM)  
Certification of Authorization: 24 CA 36003500  
—ENGINEERING EXCELLENCE—







Outfalls in question, field verified by Berkeley Township DPW	06/25/2021
REVISIONS	DATE



**General Notes and Data Sources:**

This Geographic Information System (GIS) Stormwater Outfall Mapping MS4 map is for demonstration purposes only, any use of this product with respect to accuracy and precision shall be the sole responsibility of the end user.

The areas, boundaries and details, shown on this map, are referenced, in part, from ground surveys, aerial surveys and recorded plans, tax assessment maps and as-built documents.

This map was created, in part, utilizing parcel, municipal boundary and location data provided by the Township of Berkeley. Stormwater assets, such as inlets, culverts, cleanouts, etc. were provided by the Township of Berkeley. Outfall locations verified by Berkeley Township Department of Public Works. Outfall locations were GPS field collected by Remington & Vernick Engineers utilizing the Trimble Geo-7X unit unless noted otherwise.

Additional GIS resource data and imagery data was provided by the New Jersey Geographic Information Network. The (NJGIN) data was obtained and provided by the New Jersey Geographic Information Network (NJGIN): [https://njin.state.nj.us/NJ\\_NJGINexplorer/index.jsp](https://njin.state.nj.us/NJ_NJGINexplorer/index.jsp). This secondary product has not been verified by (NJGIN) and is not state-authorized.

Additional cadastral feature mapping data, such as, waterways, roadways, railroads, aerial orthophotography, etc. was obtained from the New Jersey Department of Environmental Protection (NJDEP). The New Jersey Department of Environmental Protection (NJDEP) data was obtained and provided by the New Jersey Department of Environmental Protection: <http://www.state.nj.us/dep/gis/>. This secondary product has not been verified by (NJDEP) and is not state-authorized.

All positions are based on the following:

- NAD 83 (horizontal datum)
- New Jersey State Plane Coordinate System
- English units (feet)

The geodetic accuracy and precision of the Geographic Information System (GIS) data contained in this mapping has not been developed nor verified by a professional licensed land surveyor and shall not be nor is intended to be used in matters requiring delineation and location of true ground horizontal and/or vertical controls, unless otherwise noted.

**Legend**

- Outfalls
- Stormwater Pipes (From County)
- Stormwater Points (From County)**
  - Stormwater Structure
    - Anti-Seep Collar
    - Bubbler Basin
    - Cap
    - Cleanout
    - Connection
    - Outlet Control Structure
  - Unknown
  - Endwall
  - Headwall
  - Flared End Section (From County)
  - Berkeley Inlets (From County)
  - Stormsewer Manhole (From County)
- Blocks
- Grid
- Municipal Boundary
- Parcels
- Streams

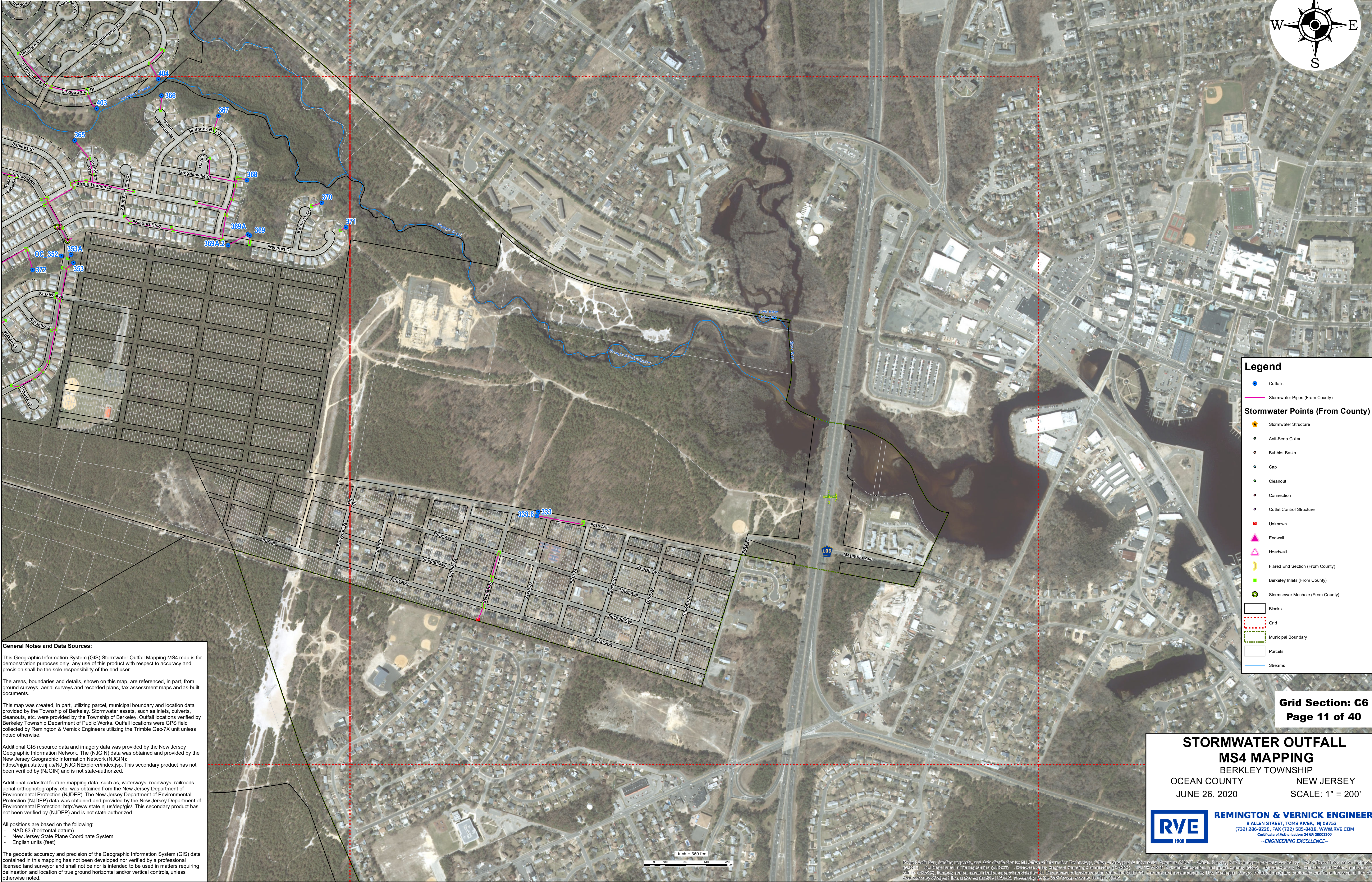
**Grid Section: C5**  
**Page 10 of 40**

**STORMWATER OUTFALL  
MS4 MAPPING**  
BERKELEY TOWNSHIP  
OCEAN COUNTY NEW JERSEY  
JUNE 26, 2020 SCALE: 1" = 200'

**RVE** REMINGTON & VERNICK ENGINEERS  
9 ALLEN STREET, TOMS RIVER, NJ 08753  
(732) 286-9220, FAX (732) 505-8416, WWW.RVE.COM  
Certificate of Authorization: 24 CA 3000390  
-ENGINEERING EXCELLENCE-



Outfalls in question, field verified by Berkeley Township DPW	06/25/2021
REVISIONS	DATE



### Legend

- Outfalls
- Stormwater Pipes (From County)
- Stormwater Points (From County)
  - Stormwater Structure
    - Anti-Seep Collar
    - Bubbler Basin
    - Cap
    - Cleanout
    - Connection
    - Outlet Control Structure
  - Unknown
  - Endwall
  - Headwall
  - Flared End Section (From County)
  - Berkeley Inlets (From County)
  - Stormsewer Manhole (From County)

- Blocks
- Grid
- Municipal Boundary
- Parcels
- Streams

**Grid Section: C6**  
**Page 11 of 40**

## STORMWATER OUTFALL MS4 MAPPING BERKELEY TOWNSHIP

OCEAN COUNTY  
JUNE 26, 2020

NEW JERSEY  
SCALE: 1" = 200'



**REMINGTON & VERNICK ENGINEERS**  
9 ALLEN STREET, TOMS RIVER, NJ 08753  
(732) 286-9220, FAX (732) 505-8416, [WWW.RVE.COM](http://WWW.RVE.COM)  
Certification of Authorization: 24 CA 3000350  
—ENGINEERING EXCELLENCE—

Reproduction, including requests, and data distribution by NJ Office of Information Technology, Office of Geographic Information Systems (NJGIS) - GIS, funding for the map was provided by NJ Office of Information Technology, NJGIS, NJ Department of Transportation (NJDOT), Delaware Valley Regional Planning Commission (DVRPC), NJ TRANSIT National Geospatial Intelligence Agency (NGA), Mercer County NJ Department of Motor and Veterans Affairs (NJDMV), map data administration support provided by NJ Department of Environmental Protection (NJDEP), contractors providing data, GIS, Geospatial Survey, Private operating contractors Quantum Spatial, Inc. Quality Assurance by MapInfo, Inc. under contract to NJGIS. Processing by: RVE was done by RVE.



Outfalls in question, field verified by Berkeley Township DPW	06/25/2021
REVISIONS	DATE



**General Notes and Data Sources:**

This Geographic Information System (GIS) Stormwater Outfall Mapping MS4 map is for demonstration purposes only, any use of this product with respect to accuracy and precision shall be the sole responsibility of the end user.

The areas, boundaries and details, shown on this map, are referenced, in part, from ground surveys, aerial surveys and recorded plans, tax assessment maps and as-built documents.

This map was created, in part, utilizing parcel, municipal boundary and location data provided by the Township of Berkeley. Stormwater assets, such as inlets, culverts, cleanouts, etc. were provided by the Township of Berkeley. Outfall locations verified by Berkeley Township Department of Public Works. Outfall locations were GPS field collected by Remington & Vernick Engineers utilizing the Trimble Geo-7X unit unless noted otherwise.

Additional GIS resource data and imagery data was provided by the New Jersey Geographic Information Network. The (NJGIN) data was obtained and provided by the New Jersey Geographic Information Network (NJGIN); [https://njin.state.nj.us/NJ\\_NJGINExplorer/index.jsp](https://njin.state.nj.us/NJ_NJGINExplorer/index.jsp). This secondary product has not been verified by (NJGIN) and is not state-authorized.

Additional cadastral feature mapping data, such as, waterways, roadways, railroads, aerial orthophotography, etc. was obtained from the New Jersey Department of Environmental Protection (NJDEP). The New Jersey Department of Environmental Protection (NJDEP) data was obtained and provided by the New Jersey Department of Environmental Protection; <http://www.state.nj.us/dep/gis/>. This secondary product has not been verified by (NJDEP) and is not state-authorized.

All positions are based on the following:

- NAD 83 (horizontal datum)
- New Jersey State Plane Coordinate System
- English units (feet)

The geodetic accuracy and precision of the Geographic Information System (GIS) data contained in this mapping has not been developed nor verified by a professional licensed land surveyor and shall not be nor is intended to be used in matters requiring delineation and location of true ground horizontal and/or vertical controls, unless otherwise noted.



**Legend**

Outfalls

Stormwater Pipes (From County)

Stormwater Structure

Anti-Seep Collar

Bubbler Basin

Cap

Cleanout

Connection

Outlet Control Structure

Unknown

Endwall

Headwall

Flared End Section (From County)

Berkeley Inlets (From County)

Stormsewer Manhole (From County)

Blocks

Grid

Municipal Boundary

Parcels

Streams

**Grid Section: C12**

**Page 12 of 40**

**STORMWATER OUTFALL  
MS4 MAPPING**

BERKELEY TOWNSHIP  
OCEAN COUNTY NEW JERSEY  
JUNE 26, 2020 SCALE: 1" = 200'



**REMINGTON & VERNICK ENGINEERS**  
9 ALLEN STREET, TOMS RIVER, NJ 08753  
(732) 286-9220, FAX (732) 505-8416, WWW.RVE.COM  
Certificate of Authorization: 24 CA 38003500  
—ENGINEERING EXCELLENCE—



Outfalls in question, field verified by Berkeley Township DPW	06/25/2021
REVISIONS	DATE



**General Notes and Data Sources:**

This Geographic Information System (GIS) Stormwater Outfall Mapping MS4 map is for demonstration purposes only, any use of this product with respect to accuracy and precision shall be the sole responsibility of the end user.

The areas, boundaries and details, shown on this map, are referenced, in part, from ground surveys, aerial surveys and recorded plans, tax assessment maps and as-built documents.

This map was created, in part, utilizing parcel, municipal boundary and location data provided by the Township of Berkeley, Stormwater assets, such as inlets, culverts, cleanouts, etc. were provided by the Township of Berkeley. Outfall locations verified by Berkeley Township Department of Public Works. Outfall locations were GPS field collected by Remington & Vernick Engineers utilizing the Trimble Geo-7X unit unless noted otherwise.

Additional GIS resource data and imagery data was provided by the New Jersey Geographic Information Network. The (NJGIN) data was obtained and provided by the New Jersey Geographic Information Network (NJGIN): [https://njin.state.nj.us/NJ\\_NJGINExplorer/index.jsp](https://njin.state.nj.us/NJ_NJGINExplorer/index.jsp). This secondary product has not been verified by (NJGIN) and is not state-authorized.

Additional cadastral feature mapping data, such as, waterways, roadways, railroads, aerial orthophotography, etc. was obtained from the New Jersey Department of Environmental Protection (NJDEP). The New Jersey Department of Environmental Protection (NJDEP) data was obtained and provided by the New Jersey Department of Environmental Protection: <http://www.state.nj.us/dep/gis/>. This secondary product has not been verified by (NJDEP) and is not state-authorized.

All positions are based on the following:

- NAD 83 (horizontal datum)
- New Jersey State Plane Coordinate System
- English units (feet)

The geodetic accuracy and precision of the Geographic Information System (GIS) data contained in this mapping has not been developed nor verified by a professional licensed land surveyor and shall not be nor is intended to be used in matters requiring delineation and location of true ground horizontal and/or vertical controls, unless otherwise noted.

**Legend**

●

Outfalls

—

Stormwater Pipes (From County)

★

Stormwater Structure

●

Anti-Seep Collar

○

Bubbler Basin

○

Cap

●

Cleanout

●

Connection

○

Outlet Control Structure

■

Unknown

▲

Endwall

△

Headwall

☾

Flared End Section (From County)

■

Berkeley Inlets (From County)

●

Stormsewer Manhole (From County)

□

Blocks

□

Grid

□

Municipal Boundary

□

Parcels

—

Streams

**Grid Section: D2**  
**Page 13 of 40**

**STORMWATER OUTFALL**

**MS4 MAPPING**

**BERKELEY TOWNSHIP**

**OCEAN COUNTY**

**JUNE 26, 2020**

**NEW JERSEY**

**SCALE: 1" = 200'**

**RVE**

1901

**REMINGTON & VERNICK ENGINEERS**

9 ALLEN STREET, TOMS RIVER, NJ 08753

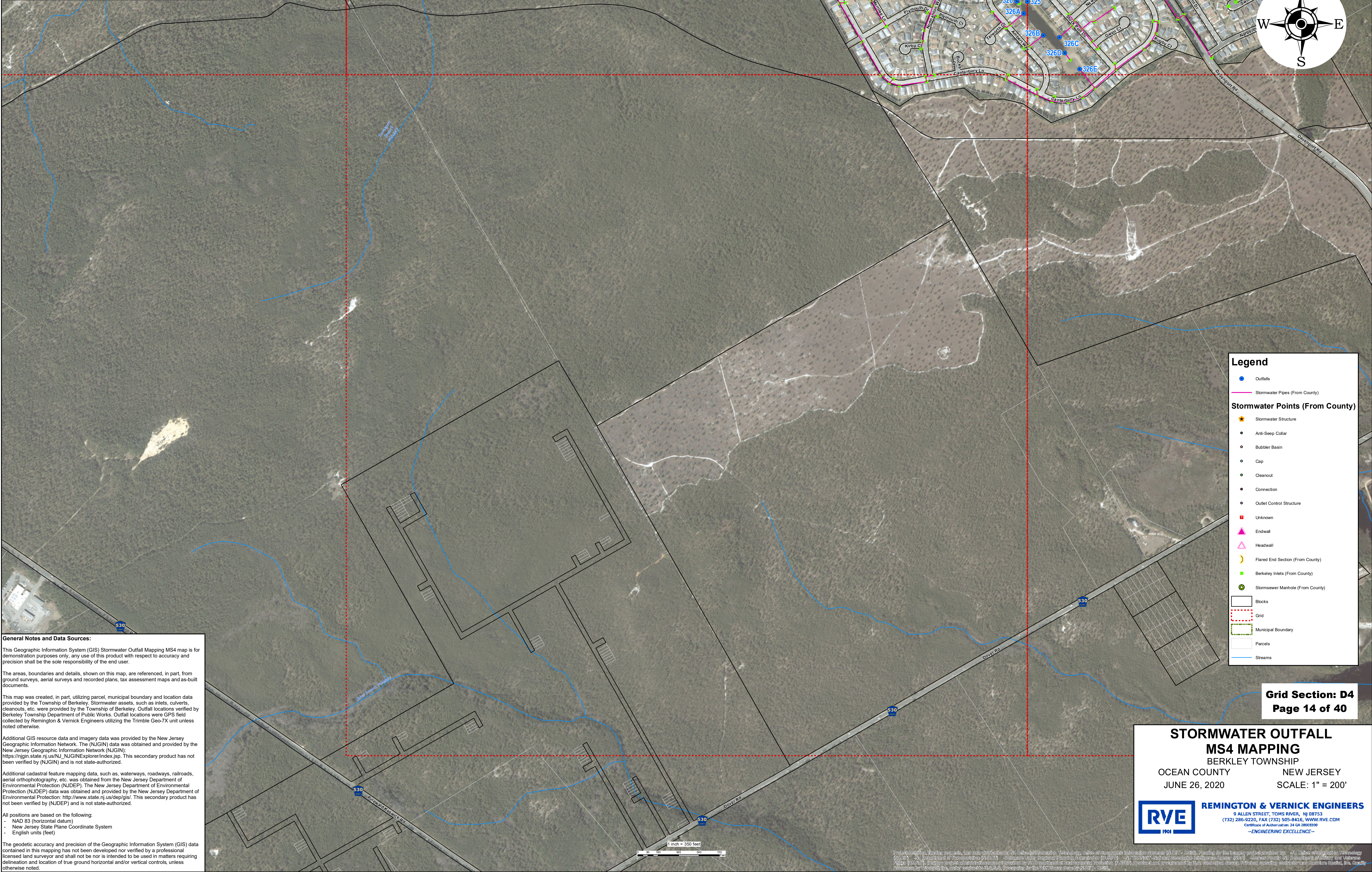
(732) 286-9220, FAX (732) 505-8416, [WWW.RVE.COM](http://WWW.RVE.COM)

CERTIFICATE OF AUTHORIZATION: 24 CA 3000390

—ENGINEERING EXCELLENCE—



Outfalls in question, field verified by Berkeley Township DPW	06/25/2021
REVISIONS	DATE



**General Notes and Data Sources:**

This Geographic Information System (GIS) Stormwater Outfall Mapping MS4 map is for demonstration purposes only, any use of this product with respect to accuracy and precision shall be the sole responsibility of the end user.

The areas, boundaries and details, shown on this map, are referenced, in part, from ground surveys, aerial surveys and recorded plans, tax assessment maps and as-built documents.

This map was created, in part, utilizing parcel, municipal boundary and location data provided by the Township of Berkeley, Stormwater assets, such as inlets, culverts, cleanouts, etc. were provided by the Township of Berkeley. Outfall locations verified by Berkeley Township Department of Public Works. Outfall locations were GPS field collected by Remington & Vernick Engineers utilizing the Trimble Geo-7X unit unless noted otherwise.

Additional GIS resource data and imagery data was provided by the New Jersey Geographic Information Network. The (NJGIN) data was obtained and provided by the New Jersey Geographic Information Network (NJGIN): [https://nigin.state.nj.us/NJ\\_NJGINExplorer/index.jsp](https://nigin.state.nj.us/NJ_NJGINExplorer/index.jsp). This secondary product has not been verified by (NJGIN) and is not state-authorized.

Additional cadastral feature mapping data, such as, waterways, roadways, railroads, aerial orthophotography, etc. was obtained from the New Jersey Department of Environmental Protection (NJDEP). The New Jersey Department of Environmental Protection (NJDEP) data was obtained and provided by the New Jersey Department of Environmental Protection; <http://www.state.nj.us/dep/gis/>. This secondary product has not been verified by (NJDEP) and is not state-authorized.

All positions are based on the following:

- NAD 83 (horizontal datum)
- New Jersey State Plane Coordinate System
- English units (feet)

The geodetic accuracy and precision of the Geographic Information System (GIS) data contained in this mapping has not been developed nor verified by a professional licensed land surveyor and shall not be nor is intended to be used in matters requiring delineation and location of true ground horizontal and/or vertical controls, unless otherwise noted.

**Legend**

Outfalls

Stormwater Pipes (From County)

Stormwater Structure

Anti-Seep Collar

Bubbler Basin

Cap

Cleanout

Connection

Outlet Control Structure

Unknown

Endwall

Headwall

Flared End Section (From County)

Berkeley Inlets (From County)

Stormsewer Manhole (From County)

Blocks

Grid

Municipal Boundary

Parcels

Streams

**Stormwater Points (From County)**

**Grid Section: D4**  
**Page 14 of 40**

**STORMWATER OUTFALL**

**MS4 MAPPING**

**BERKELEY TOWNSHIP**

**OCEAN COUNTY**

**JUNE 26, 2020**

**NEW JERSEY**

**SCALE: 1" = 200'**

**RVE**

1901

**REMINGTON & VERNICK ENGINEERS**

9 ALLEN STREET, TOMS RIVER, NJ 08753

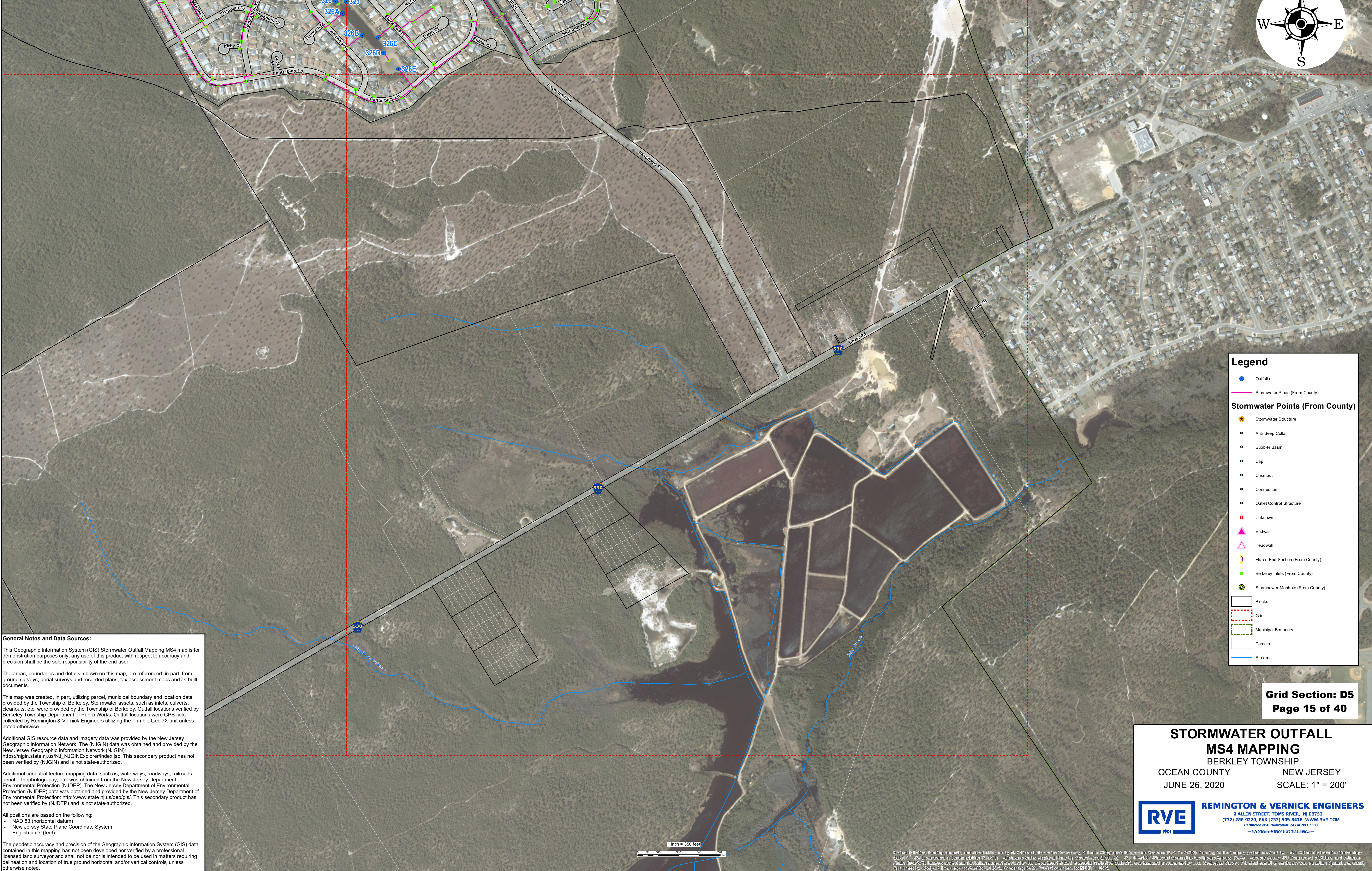
(732) 286-9220, FAX (732) 505-8416, [WWW.RVE.COM](http://WWW.RVE.COM)

CERTIFICATE OF AUTHORIZATION: 24 CA 3000300

**-ENGINEERING EXCELLENCE-**



Outfalls in question, field verified by Berkeley Township DPW	06/25/2021
REVISIONS	DATE



**General Notes and Data Sources:**

This Geographic Information System (GIS) Stormwater Outfall Mapping MS4 map is for demonstration purposes only, any use of this product with respect to accuracy and precision shall be the sole responsibility of the end user.

The areas, boundaries and details, shown on this map, are referenced, in part, from ground surveys, aerial surveys and recorded plans, tax assessment maps and as-built documents.

This map was created, in part, utilizing parcel, municipal boundary and location data provided by the Township of Berkeley. Stormwater assets, such as inlets, culverts, cleanouts, etc. were provided by the Township of Berkeley. Outfall locations verified by Berkeley Township Department of Public Works. Outfall locations were GPS field collected by Remington & Vernick Engineers utilizing the Trimble Geo-7X unit unless noted otherwise.

Additional GIS resource data and imagery data was provided by the New Jersey Geographic Information Network. The (NJGIN) data was obtained and provided by the New Jersey Geographic Information Network (NJGIN): [https://njin.state.nj.us/NJ\\_NJGINExplorer/index.jsp](https://njin.state.nj.us/NJ_NJGINExplorer/index.jsp). This secondary product has not been verified by (NJGIN) and is not state-authorized.

Additional cadastral feature mapping data, such as, waterways, roadways, railroads, aerial orthophotography, etc. was obtained from the New Jersey Department of Environmental Protection (NJDEP). The New Jersey Department of Environmental Protection (NJDEP) data was obtained and provided by the New Jersey Department of Environmental Protection; <http://www.state.nj.us/dep/gis/>. This secondary product has not been verified by (NJDEP) and is not state-authorized.

All positions are based on the following:

- NAD 83 (horizontal datum)
- New Jersey State Plane Coordinate System
- English units (feet)

The geodetic accuracy and precision of the Geographic Information System (GIS) data contained in this mapping has not been developed nor verified by a professional licensed land surveyor and shall not be nor is intended to be used in matters requiring delineation and location of true ground horizontal and/or vertical controls, unless otherwise noted.



Outfalls in question, field verified by Berkeley Township DPW	06/25/2021
REVISIONS	DATE



**General Notes and Data Sources:**

This Geographic Information System (GIS) Stormwater Outfall Mapping MS4 map is for demonstration purposes only, any use of this product with respect to accuracy and precision shall be the sole responsibility of the end user.

The areas, boundaries and details, shown on this map, are referenced, in part, from ground surveys, aerial surveys and recorded plans, tax assessment maps and as-built documents.

This map was created, in part, utilizing parcel, municipal boundary and location data provided by the Township of Berkeley. Stormwater assets, such as inlets, culverts, cleanouts, etc. were provided by the Township of Berkeley. Outfall locations verified by Berkeley Township Department of Public Works. Outfall locations were GPS field collected by Remington & Vernick Engineers utilizing the Trimble Geo-7X unit unless noted otherwise.

Additional GIS resource data and imagery data was provided by the New Jersey Geographic Information Network. The (NJGIN) data was obtained and provided by the New Jersey Geographic Information Network (NJGIN): <https://njin.state.nj.us/NJGINExplorer/index.jsp>. This secondary product has not been verified by (NJGIN) and is not state-authorized.

Additional cadastral feature mapping data, such as, waterways, roadways, railroads, aerial orthophotography, etc. was obtained from the New Jersey Department of Environmental Protection (NJDEP). The New Jersey Department of Environmental Protection (NJDEP) data was obtained and provided by the New Jersey Department of Environmental Protection: <http://www.state.nj.us/dep/gis/>. This secondary product has not been verified by (NJDEP) and is not state-authorized.

All positions are based on the following:

- NAD 83 (horizontal datum)
- New Jersey State Plane Coordinate System
- English units (feet)

The geodetic accuracy and precision of the Geographic Information System (GIS) data contained in this mapping has not been developed nor verified by a professional licensed land surveyor and shall not be nor is intended to be used in matters requiring delineation and location of true ground horizontal and/or vertical controls, unless otherwise noted.



Outfalls in question, field verified by Berkeley Township DPW	06/25/2021
REVISIONS	DATE



**General Notes and Data Sources:**

This Geographic Information System (GIS) Stormwater Outfall Mapping MS4 map is for demonstration purposes only, any use of this product with respect to accuracy and precision shall be the sole responsibility of the end user.

The areas, boundaries and details, shown on this map, are referenced, in part, from ground surveys, aerial surveys and recorded plans, tax assessment maps and as-built documents.

This map was created, in part, utilizing parcel, municipal boundary and location data provided by the Township of Berkeley, Stormwater assets, such as inlets, culverts, cleanouts, etc. were provided by the Township of Berkeley. Outfall locations verified by Berkeley Township Department of Public Works. Outfall locations were GPS field collected by Remington & Vernick Engineers utilizing the Trimble Geo-7X unit unless noted otherwise.

Additional GIS resource data and imagery data was provided by the New Jersey Geographic Information Network. The (NJGIN) data was obtained and provided by the New Jersey Geographic Information Network (NJGIN): [https://njin.state.nj.us/NJ\\_NJGINexplorer/index.jsp](https://njin.state.nj.us/NJ_NJGINexplorer/index.jsp). This secondary product has not been verified by (NJGIN) and is not state-authorized.

Additional cadastral feature mapping data, such as, waterways, roadways, railroads, aerial orthophotography, etc. was obtained from the New Jersey Department of Environmental Protection (NJDEP). The New Jersey Department of Environmental Protection (NJDEP) data was obtained and provided by the New Jersey Department of Environmental Protection; <http://www.state.nj.us/dep/gis/>. This secondary product has not been verified by (NJDEP) and is not state-authorized.

All positions are based on the following:

- NAD 83 (horizontal datum)
- New Jersey State Plane Coordinate System
- English units (feet)

The geodetic accuracy and precision of the Geographic Information System (GIS) data contained in this mapping has not been developed nor verified by a professional licensed land surveyor and shall not be nor is intended to be used in matters requiring delineation and location of true ground horizontal and/or vertical controls, unless otherwise noted.



Outfalls in question, field verified by Berkeley Township DPW	06/25/2021
REVISIONS	DATE



**General Notes and Data Sources:**

This Geographic Information System (GIS) Stormwater Outfall Mapping MS4 map is for demonstration purposes only, any use of this product with respect to accuracy and precision shall be the sole responsibility of the end user.

The areas, boundaries and details, shown on this map, are referenced, in part, from ground surveys, aerial surveys and recorded plans, tax assessment maps and as-built documents.

This map was created, in part, utilizing parcel, municipal boundary and location data provided by the Township of Berkeley, Stormwater assets, such as inlets, culverts, cleanouts, etc. were provided by the Township of Berkeley. Outfall locations verified by Berkeley Township Department of Public Works. Outfall locations were GPS field collected by Remington & Vernick Engineers utilizing the Trimble Geo-7X unit unless noted otherwise.

Additional GIS resource data and imagery data was provided by the New Jersey Geographic Information Network. The (NJGIN) data was obtained and provided by the New Jersey Geographic Information Network (NJGIN): [https://njin.state.nj.us/NJ\\_NJGINexplorer/index.jsp](https://njin.state.nj.us/NJ_NJGINexplorer/index.jsp). This secondary product has not been verified by (NJGIN) and is not state-authorized.

Additional cadastral feature mapping data, such as, waterways, roadways, railroads, aerial orthophotography, etc. was obtained from the New Jersey Department of Environmental Protection (NJDEP). The New Jersey Department of Environmental Protection (NJDEP) data was obtained and provided by the New Jersey Department of Environmental Protection; <http://www.state.nj.us/dep/gis/>. This secondary product has not been verified by (NJDEP) and is not state-authorized.

All positions are based on the following:

- NAD 83 (horizontal datum)
- New Jersey State Plane Coordinate System
- English units (feet)

The geodetic accuracy and precision of the Geographic Information System (GIS) data contained in this mapping has not been developed nor verified by a professional licensed land surveyor and shall not be nor is intended to be used in matters requiring delineation and location of true ground horizontal and/or vertical controls, unless otherwise noted.

### Legend

- Outfalls
- Stormwater Pipes (From County)
- ★ Stormwater Structure
  - Anti-Seep Collar
  - Bubbler Basin
  - Cap
  - Cleanout
  - Connection
  - Outlet Control Structure
  - Unknown
  - ▲ Endwall
  - △ Headwall
  - ☺ Flared End Section (From County)
  - Berkeley Inlets (From County)
  - Stormsewer Manhole (From County)

- Blocks
- Grid
- Municipal Boundary
- Parcels
- Streams

**Grid Section: D9**  
**Page 18 of 40**

## STORMWATER OUTFALL MS4 MAPPING BERKELEY TOWNSHIP

OCEAN COUNTY NEW JERSEY  
JUNE 26, 2020 SCALE: 1" = 200'



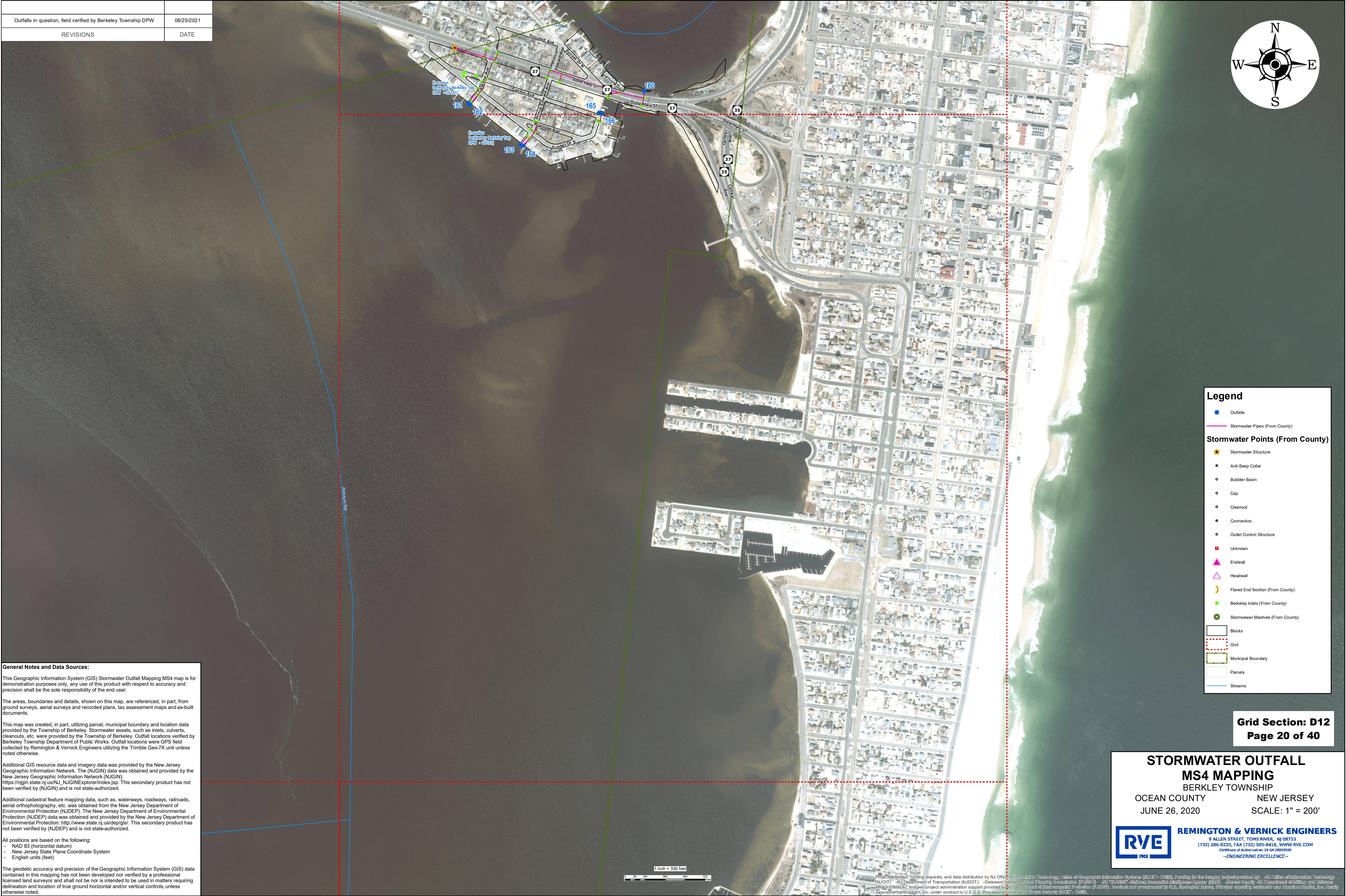
**REMINGTON & VERNICK ENGINEERS**  
9 ALLEN STREET, TOMS RIVER, NJ 08753  
(732) 286-9220, FAX (732) 505-8436, [WWW.RVE.COM](http://WWW.RVE.COM)  
Certification of Authorization: 24 CA 18000390  
—ENGINEERING EXCELLENCE—







Outfalls in question, field verified by Berkeley Township DPW	06/25/2021
REVISIONS	DATE



**General Notes and Data Sources:**

This Geographic Information System (GIS) Stormwater Outfall Mapping MS4 map is for demonstration purposes only, any use of this product with respect to accuracy and precision shall be the sole responsibility of the end user.

The areas, boundaries and details, shown on this map, are referenced, in part, from ground surveys, aerial surveys and recorded plans, tax assessment maps and as-built documents.

This map was created, in part, utilizing parcel, municipal boundary and location data provided by the Township of Berkeley. Stormwater assets, such as inlets, culverts, cleanouts, etc. were provided by the Township of Berkeley. Outfall locations verified by Berkeley Township Department of Public Works. Outfall locations were GPS field collected by Remington & Vernick Engineers utilizing the Trimble Geo-7X unit unless noted otherwise.

Additional GIS resource data and imagery data was provided by the New Jersey Geographic Information Network. The (NJGIN) data was obtained and provided by the New Jersey Geographic Information Network (NJGIN): [https://njin.state.nj.us/NJ\\_NJGINexplorer/index.jsp](https://njin.state.nj.us/NJ_NJGINexplorer/index.jsp). This secondary product has not been verified by (NJGIN) and is not state-authorized.

Additional cadastral feature mapping data, such as, waterways, roadways, railroads, aerial orthophotography, etc. was obtained from the New Jersey Department of Environmental Protection (NJDEP). The New Jersey Department of Environmental Protection (NJDEP) data was obtained and provided by the New Jersey Department of Environmental Protection: <http://www.state.nj.us/dep/gis/>. This secondary product has not been verified by (NJDEP) and is not state-authorized.

All positions are based on the following:

- NAD 83 (horizontal datum)
- New Jersey State Plane Coordinate System
- English units (feet)

The geodetic accuracy and precision of the Geographic Information System (GIS) data contained in this mapping has not been developed nor verified by a professional licensed land surveyor and shall not be nor is intended to be used in matters requiring delineation and location of true ground horizontal and/or vertical controls, unless otherwise noted.



**Legend**

Outfalls

Stormwater Pipes (From County)

**Stormwater Points (From County)**

Stormwater Structure

Anti-Seep Collar

Bubbler Basin

Cap

Cleanout

Connection

Outlet Control Structure

Unknown

Endwall

Headwall

Flared End Section (From County)

Berkeley Inlets (From County)

Stormsewer Manhole (From County)

Blocks

Grid

Municipal Boundary

Parcels

Streams

**Grid Section: D12**  
**Page 20 of 40**

**STORMWATER OUTFALL**  
**MS4 MAPPING**  
BERKELEY TOWNSHIP  
OCEAN COUNTY  
JUNE 26, 2020

NEW JERSEY

SCALE: 1" = 200'

**RVE**  
1901

**REMINGTON & VERNICK ENGINEERS**  
9 ALLEN STREET, TOMS RIVER, NJ 08753  
(732) 286-9220, FAX (732) 505-8416, [WWW.RVE.COM](http://WWW.RVE.COM)  
Certificate of Authorization: 24 CA 38003500  
—ENGINEERING EXCELLENCE—



Outfalls in question, field verified by Berkeley Township DPW	06/25/2021
REVISIONS	DATE



**General Notes and Data Sources:**

This Geographic Information System (GIS) Stormwater Outfall Mapping MS4 map is for demonstration purposes only, any use of this product with respect to accuracy and precision shall be the sole responsibility of the end user.

The areas, boundaries and details, shown on this map, are referenced, in part, from ground surveys, aerial surveys and recorded plans, tax assessment maps and as-built documents.

This map was created, in part, utilizing parcel, municipal boundary and location data provided by the Township of Berkeley. Stormwater assets, such as inlets, culverts, cleanouts, etc. were provided by the Township of Berkeley. Outfall locations verified by Berkeley Township Department of Public Works. Outfall locations were GPS field collected by Remington & Vernick Engineers utilizing the Trimble Geo-7X unit unless noted otherwise.

Additional GIS resource data and imagery data was provided by the New Jersey Geographic Information Network. The (NJGIN) data was obtained and provided by the New Jersey Geographic Information Network (NJGIN): [https://njin.state.nj.us/NJ\\_NGINExplorer/index.jsp](https://njin.state.nj.us/NJ_NGINExplorer/index.jsp). This secondary product has not been verified by (NJGIN) and is not state-authorized.

Additional cadastral feature mapping data, such as, waterways, roadways, railroads, aerial orthophotography, etc. was obtained from the New Jersey Department of Environmental Protection (NJDEP). The New Jersey Department of Environmental Protection (NJDEP) data was obtained and provided by the New Jersey Department of Environmental Protection; <http://www.state.nj.us/dep/gis/>. This secondary product has not been verified by (NJDEP) and is not state-authorized.

All positions are based on the following:

- NAD 83 (horizontal datum)
- New Jersey State Plane Coordinate System
- English units (feet)

The geodetic accuracy and precision of the Geographic Information System (GIS) data contained in this mapping has not been developed nor verified by a professional licensed land surveyor and shall not be nor is intended to be used in matters requiring delineation and location of true ground horizontal and/or vertical controls, unless otherwise noted.

**Legend**

Outfalls

Stormwater Pipes (From County)

**Stormwater Points (From County)**

Stormwater Structure

Anti-Sleep Collar

Bubbler Basin

Cap

Cleanout

Connection

Outlet Control Structure

Unknown

Endwall

Headwall

Flared End Section (From County)

Berkeley Inlets (From County)

Stormsewer Manhole (From County)

Blocks

Grid

Municipal Boundary

Parcels

Streams

**Grid Section: E2**  
**Page 21 of 40**

**STORMWATER OUTFALL**

**MS4 MAPPING**

**BERKELEY TOWNSHIP**

**OCEAN COUNTY**

**JUNE 26, 2020**

**NEW JERSEY**

**SCALE: 1" = 200'**

**RVE**

1901

**REMINGTON & VERNICK ENGINEERS**

9 ALLEN STREET, TOMS RIVER, NJ 08753

(732) 286-9220, FAX (732) 505-8416, [WWW.RVE.COM](http://WWW.RVE.COM)

CERTIFICATE OF AUTHORIZATION: 24 CA 3800300

**—ENGINEERING EXCELLENCE—**



Outfalls in question, field verified by Berkeley Township DPW	06/25/2021
REVISIONS	DATE



**General Notes and Data Sources:**

This Geographic Information System (GIS) Stormwater Outfall Mapping MS4 map is for demonstration purposes only, any use of this product with respect to accuracy and precision shall be the sole responsibility of the end user.

The areas, boundaries and details, shown on this map, are referenced, in part, from ground surveys, aerial surveys and recorded plans, tax assessment maps and as-built documents.

This map was created, in part, utilizing parcel, municipal boundary and location data provided by the Township of Berkeley. Stormwater assets, such as inlets, culverts, cleanouts, etc. were provided by the Township of Berkeley. Outfall locations verified by Berkeley Township Department of Public Works. Outfall locations were GPS field collected by Remington & Vernick Engineers utilizing the Trimble Geo-7X unit unless noted otherwise.

Additional GIS resource data and imagery data was provided by the New Jersey Geographic Information Network. The (NJGIN) data was obtained and provided by the New Jersey Geographic Information Network (NJGIN): [https://njin.state.nj.us/NJ\\_NJGINexplorer/index.jsp](https://njin.state.nj.us/NJ_NJGINexplorer/index.jsp). This secondary product has not been verified by (NJGIN) and is not state-authorized.

Additional cadastral feature mapping data, such as, waterways, roadways, railroads, aerial orthophotography, etc. was obtained from the New Jersey Department of Environmental Protection (NJDEP). The New Jersey Department of Environmental Protection (NJDEP) data was obtained and provided by the New Jersey Department of Environmental Protection; <http://www.state.nj.us/dep/gis/>. This secondary product has not been verified by (NJDEP) and is not state-authorized.

All positions are based on the following:

- NAD 83 (horizontal datum)
- New Jersey State Plane Coordinate System
- English units (feet)

The geodetic accuracy and precision of the Geographic Information System (GIS) data contained in this mapping has not been developed nor verified by a professional licensed land surveyor and shall not be nor is intended to be used in matters requiring delineation and location of true ground horizontal and/or vertical controls, unless otherwise noted.



**General Notes and Data Sources:**

This Geographic Information System (GIS) Stormwater Outfall Mapping MS4 map is for demonstration purposes only, any use of this product with respect to accuracy and precision shall be the sole responsibility of the end user.

The areas, boundaries and details, shown on this map, are referenced, in part, from ground surveys, aerial surveys and recorded plans, tax assessment maps and as-built documents.

This map was created, in part, utilizing parcel, municipal boundary and location data provided by the Township of Berkeley. Stormwater assets, such as inlets, culverts, cleanouts, etc. were provided by the Township of Berkeley. Outfall locations verified by Berkeley Township Department of Public Works. Outfall locations were GPS field collected by Remington & Vernick Engineers utilizing the Trimble Geo-7X unit unless noted otherwise.

Additional GIS resource data and imagery data was provided by the New Jersey Geographic Information Network. The (NJGIN) data was obtained and provided by the New Jersey Geographic Information Network (NJGIN): [https://njgin.state.nj.us/NJ\\_NJGINExplorer/index.jsp](https://njgin.state.nj.us/NJ_NJGINExplorer/index.jsp). This secondary product has not been verified by (NJGIN) and is not state-authorized.

Additional cadastral feature mapping data, such as, waterways, roadways, railroads, aerial orthophotography, etc. was obtained from the New Jersey Department of Environmental Protection (NJDEP). The New Jersey Department of Environmental Protection (NJDEP) data was obtained and provided by the New Jersey Department of Environmental Protection: <http://www.state.nj.us/dep/gis/>. This secondary product has not been verified by (NJDEP) and is not state-authorized.

All positions are based on the following:

- NAD 83 (horizontal datum)
- New Jersey State Plane Coordinate System
- English units (feet)

The geodetic accuracy and precision of the Geographic Information System (GIS) data contained in this mapping has not been developed nor verified by a professional licensed land surveyor and shall not be nor is intended to be used in matters requiring delineation and location of true ground horizontal and/or vertical controls, unless otherwise noted.

**Legend**

- Outfalls
- Stormwater Pipes (From County)
- Stormwater Structure
- Anti-Sleep Collar
- Bubbler Basin
- Cap
- Cleanout
- Connection
- Outlet Control Structure
- Unknown
- Endwall
- Headwall
- Flared End Section (From County)
- Berkeley Inlets (From County)
- Stormsewer Manhole (From County)
- Blocks
- Grid
- Municipal Boundary
- Parcels
- Streams

**Grid Section: E8**  
**Page 23 of 40**

**STORMWATER OUTFALL MS4 MAPPING**  
BERKLEY TOWNSHIP  
OCEAN COUNTY NEW JERSEY  
JUNE 26, 2020 SCALE: 1" = 200'

**REMINGTON & VERNICK ENGINEERS**  
9 ALLEN STREET, TOMS RIVER, NJ 08753  
(732) 286-9220, FAX (732) 505-8416, WWW.RVE.COM  
Certificate of Authorization: 24 CA 28003306  
—ENGINEERING EXCELLENCE—

Document Path: P:\GIS Projects\NJ\Ocean County\Berkeley Township\1506T099\10.5 Berkley Stormwater Outfall Mapping MS4.mxd



Outfalls in question, field verified by Berkeley Township DPW	06/25/2021
REVISIONS	DATE



**General Notes and Data Sources:**

This Geographic Information System (GIS) Stormwater Outfall Mapping MS4 map is for demonstration purposes only, any use of this product with respect to accuracy and precision shall be the sole responsibility of the end user.

The areas, boundaries and details, shown on this map, are referenced, in part, from ground surveys, aerial surveys and recorded plans, tax assessment maps and as-built documents.

This map was created, in part, utilizing parcel, municipal boundary and location data provided by the Township of Berkeley. Stormwater assets, such as inlets, culverts, cleanouts, etc. were provided by the Township of Berkeley. Outfall locations verified by Berkeley Township Department of Public Works. Outfall locations were GPS field collected by Remington & Vernick Engineers utilizing the Trimble Geo-7X unit unless noted otherwise.

Additional GIS resource data and imagery data was provided by the New Jersey Geographic Information Network. The (NJGIN) data was obtained and provided by the New Jersey Geographic Information Network (NJGIN): [https://njin.state.nj.us/NJ\\_NJGINexplorer/index.jsp](https://njin.state.nj.us/NJ_NJGINexplorer/index.jsp). This secondary product has not been verified by (NJGIN) and is not state-authorized.

Additional cadastral feature mapping data, such as, waterways, roadways, railroads, aerial orthophotography, etc. was obtained from the New Jersey Department of Environmental Protection (NJDEP). The New Jersey Department of Environmental Protection (NJDEP) data was obtained and provided by the New Jersey Department of Environmental Protection: <http://www.state.nj.us/dep/gis/>. This secondary product has not been verified by (NJDEP) and is not state-authorized.

All positions are based on the following:

- NAD 83 (horizontal datum)
- New Jersey State Plane Coordinate System
- English units (feet)

The geodetic accuracy and precision of the Geographic Information System (GIS) data contained in this mapping has not been developed nor verified by a professional licensed land surveyor and shall not be nor is intended to be used in matters requiring delineation and location of true ground horizontal and/or vertical controls, unless otherwise noted.

**Legend**

- Outfalls
- Stormwater Pipes (From County)
- ★ Stormwater Structure
  - Anti-Sleep Collar
  - Bubbler Basin
  - Cap
  - Cleanout
  - Connection
  - Outlet Control Structure
  - Unknown
  - ▲ Endwall
  - △ Headwall
  - ☺ Flared End Section (From County)
- Berkeley Inlets (From County)
- Stormsewer Manhole (From County)
- Blocks
- Grid
- Municipal Boundary
- Parcels
- Streams

**Grid Section: E9**  
**Page 24 of 40**

**STORMWATER OUTFALL  
MS4 MAPPING**  
BERKELEY TOWNSHIP  
OCEAN COUNTY NEW JERSEY  
JUNE 26, 2020 SCALE: 1" = 200'

**RVE** REMINGTON & VERNICK ENGINEERS  
9 ALLEN STREET, TOMS RIVER, NJ 08753  
(732) 286-9220, FAX (732) 505-8416, WWW.RVE.COM  
Certified as a Professional Engineering Firm, No. 24 CA 0000390  
—ENGINEERING EXCELLENCE—



**General Notes and Data Sources:**

This Geographic Information System (GIS) Stormwater Outfall Mapping MS4 map is for demonstration purposes only, any use of this product with respect to accuracy and precision shall be the sole responsibility of the end user.

The areas, boundaries and details, shown on this map, are referenced, in part, from ground surveys, aerial surveys and recorded plans, tax assessment maps and as-built documents.

This map was created, in part, utilizing parcel, municipal boundary and location data provided by the Township of Berkeley. Stormwater assets, such as inlets, culverts, cleanouts, etc. were provided by the Township of Berkeley. Outfall locations verified by Berkeley Township Department of Public Works. Outfall locations were GPS field collected by Remington & Vernick Engineers utilizing the Trimble Geo-7X unit unless noted otherwise.

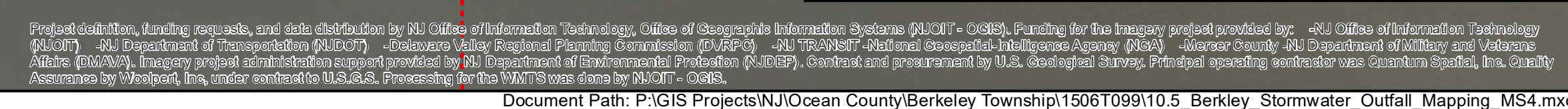
Additional GIS resource data and imagery data was provided by the New Jersey Geographic Information Network. The (NJGIN) data was obtained and provided by the New Jersey Geographic Information Network (NJGIN): [https://njgin.state.nj.us/NJ\\_NJGINExplorer/index.jsp](https://njgin.state.nj.us/NJ_NJGINExplorer/index.jsp). This secondary product has not been verified by (NJGIN) and is not state-authorized.

Additional cadastral feature mapping data, such as, waterways, roadways, railroads, aerial orthophotography, etc. was obtained from the New Jersey Department of Environmental Protection (NJDEP). The New Jersey Department of Environmental Protection (NJDEP) data was obtained and provided by the New Jersey Department of Environmental Protection: <http://www.state.nj.us/dep/gis/>. This secondary product has not been verified by (NJDEP) and is not state-authorized.

All positions are based on the following:

- NAD 83 (horizontal datum)
- New Jersey State Plane Coordinate System
- English units (feet)

The geotied accuracy and precision of the Geographic Information System (GIS) data contained in this mapping has not been developed nor verified by a professional licensed land surveyor and shall not be nor is intended to be used in matters requiring delineation and location of true ground horizontal and/or vertical controls, unless otherwise noted.



Document Path: P:\GIS Projects\NJ\Ocean County\Berkeley Township\1506T099\10.5 Berkley Stormwater Outfall Mapping MS4.mxd







Outfalls in question, field verified by Berkeley Township DPW	06/25/2021
REVISIONS	DATE



**General Notes and Data Sources:**

This Geographic Information System (GIS) Stormwater Outfall Mapping MS4 map is for demonstration purposes only, any use of this product with respect to accuracy and precision shall be the sole responsibility of the end user.

The areas, boundaries and details, shown on this map, are referenced, in part, from ground surveys, aerial surveys and recorded plans, tax assessment maps and as-built documents.

This map was created, in part, utilizing parcel, municipal boundary and location data provided by the Township of Berkeley, Stormwater assets, such as inlets, culverts, cleanouts, etc. were provided by the Township of Berkeley. Outfall locations verified by Berkeley Township Department of Public Works. Outfall locations were GPS field collected by Remington & Vernick Engineers utilizing the Trimble Geo-7X unit unless noted otherwise.

Additional GIS resource data and imagery data was provided by the New Jersey Geographic Information Network (NJGIN). The (NJGIN) data was obtained and provided by the New Jersey Geographic Information Network (NJGIN): [https://njin.state.nj.us/NJ\\_NJGINExplorer/index.jsp](https://njin.state.nj.us/NJ_NJGINExplorer/index.jsp). This secondary product has not been verified by (NJGIN) and is not state-authorized.

Additional cadastral feature mapping data, such as, waterways, roadways, railroads, aerial orthophotography, etc. was obtained from the New Jersey Department of Environmental Protection (NJDEP). The New Jersey Department of Environmental Protection (NJDEP) data was obtained and provided by the New Jersey Department of Environmental Protection; <http://www.state.nj.us/dep/gis/>. This secondary product has not been verified by (NJDEP) and is not state-authorized.

All positions are based on the following:

- NAD 83 (horizontal datum)
- New Jersey State Plane Coordinate System
- English units (feet)

The geodetic accuracy and precision of the Geographic Information System (GIS) data contained in this mapping has not been developed nor verified by a professional licensed land surveyor and shall not be nor is intended to be used in matters requiring delineation and location of true ground horizontal and/or vertical controls, unless otherwise noted.

Legend

Outfalls

Stormwater Pipes (From County)

Stormwater Structure

Anti-Seep Collar

Bubbler Basin

Cap

Cleanout

Connection

Outlet Control Structure

Unknown

Endwall

Headwall

Flared End Section (From County)

Berkeley Inlets (From County)

Stormsewer Manhole (From County)

Blocks

Grid

Municipal Boundary

Parcels

Streams

Grid Section: E12

Page 27 of 40

STORMWATER OUTFALL

MS4 MAPPING

BERKELEY TOWNSHIP

OCEAN COUNTY

JUNE 26, 2020

NEW JERSEY

SCALE: 1" = 200'

RVE

1901

REMINGTON & VERNICK ENGINEERS

9 ALLEN STREET, TOMS RIVER, NJ 08753

(732) 286-9220, FAX (732) 505-8436, WWW.RVE.COM

CERTIFICATE OF AUTHORIZATION: 24 CA 30003500

—ENGINEERING EXCELLENCE—

Printed On: October 21, 2021

Document Path: P:\GIS Projects\NJ\Ocean County\Berkeley Township\1506T099110.5\_Berkeley\_Stormwater\_Outfall\_Mapping\_MS4.mxd



Outfalls in question, field verified by Berkeley Township DPW	06/25/2021
REVISIONS	DATE



**General Notes and Data Sources:**

This Geographic Information System (GIS) Stormwater Outfall Mapping MS4 map is for demonstration purposes only, any use of this product with respect to accuracy and precision shall be the sole responsibility of the end user.

The areas, boundaries and details, shown on this map, are referenced, in part, from ground surveys, aerial surveys and recorded plans, tax assessment maps and as-built documents.

This map was created, in part, utilizing parcel, municipal boundary and location data provided by the Township of Berkeley. Stormwater assets, such as inlets, culverts, cleanouts, etc. were provided by the Township of Berkeley. Outfall locations verified by Berkeley Township Department of Public Works. Outfall locations were GPS field collected by Remington & Vernick Engineers utilizing the Trimble Geo-7X unit unless noted otherwise.

Additional GIS resource data and imagery data was provided by the New Jersey Geographic Information Network. The (NJGIN) data was obtained and provided by the New Jersey Geographic Information Network (NJGIN): [https://nigin.state.nj.us/NJ\\_NJGINExplorer/index.jsp](https://nigin.state.nj.us/NJ_NJGINExplorer/index.jsp). This secondary product has not been verified by (NJGIN) and is not state-authorized.

Additional cadastral feature mapping data, such as, waterways, roadways, railroads, aerial orthophotography, etc. was obtained from the New Jersey Department of Environmental Protection (NJDEP). The New Jersey Department of Environmental Protection (NJDEP) data was obtained and provided by the New Jersey Department of Environmental Protection: <http://www.state.nj.us/dep/gis/>. This secondary product has not been verified by (NJDEP) and is not state-authorized.

All positions are based on the following:

- NAD 83 (horizontal datum)
- New Jersey State Plane Coordinate System
- English units (feet)

The geodetic accuracy and precision of the Geographic Information System (GIS) data contained in this mapping has not been developed nor verified by a professional licensed land surveyor and shall not be nor is intended to be used in matters requiring delineation and location of true ground horizontal and/or vertical controls, unless otherwise noted.







Outfalls in question, field verified by Berkeley Township DPW	06/25/2021
REVISIONS	DATE



**General Notes and Data Sources:**

This Geographic Information System (GIS) Stormwater Outfall Mapping MS4 map is for demonstration purposes only, any use of this product with respect to accuracy and precision shall be the sole responsibility of the end user.

The areas, boundaries and details, shown on this map, are referenced, in part, from ground surveys, aerial surveys and recorded plans, tax assessment maps and as-built documents.

This map was created, in part, utilizing parcel, municipal boundary and location data provided by the Township of Berkeley, Stormwater assets, such as inlets, culverts, cleanouts, etc. were provided by the Township of Berkeley. Outfall locations verified by Berkeley Township Department of Public Works. Outfall locations were GPS field collected by Remington & Vernick Engineers utilizing the Trimble Geo-7X unit unless noted otherwise.

Additional GIS resource data and imagery data was provided by the New Jersey Geographic Information Network. The (NJGIN) data was obtained and provided by the New Jersey Geographic Information Network (NJGIN): [https://njin.state.nj.us/NJ\\_NJGINexplorer/index.jsp](https://njin.state.nj.us/NJ_NJGINexplorer/index.jsp). This secondary product has not been verified by (NJGIN) and is not state-authorized.

Additional cadastral feature mapping data, such as, waterways, roadways, railroads, aerial orthophotography, etc. was obtained from the New Jersey Department of Environmental Protection (NJDEP). The New Jersey Department of Environmental Protection (NJDEP) data was obtained and provided by the New Jersey Department of Environmental Protection: <http://www.state.nj.us/dep/gis/>. This secondary product has not been verified by (NJDEP) and is not state-authorized.

All positions are based on the following:

- NAD 83 (horizontal datum)
- New Jersey State Plane Coordinate System
- English units (feet)

The geodetic accuracy and precision of the Geographic Information System (GIS) data contained in this mapping has not been developed nor verified by a professional licensed land surveyor and shall not be nor is intended to be used in matters requiring delineation and location of true ground horizontal and/or vertical controls, unless otherwise noted.

**Legend**

- Outfalls
- Stormwater Pipes (From County)
- Stormwater Structure
  - Anti-Seep Collar
  - Bubbler Basin
  - Cap
  - Cleanout
  - Connection
  - Outlet Control Structure
  - Unknown
  - Endwall
  - Headwall
  - Flared End Section (From County)
- Berkeley Inlets (From County)
- Stormsewer Manhole (From County)
- Blocks
- Grid
- Municipal Boundary
- Parcels
- Streams

**Grid Section: F7**  
**Page 30 of 40**

**STORMWATER OUTFALL  
MS4 MAPPING**  
BERKELEY TOWNSHIP  
OCEAN COUNTY NEW JERSEY  
JUNE 26, 2020 SCALE: 1" = 200'

**RVE** REMINGTON & VERNICK ENGINEERS  
9 ALLEN STREET, TOMS RIVER, NJ 08753  
(732) 286-9220, FAX (732) 505-8416, WWW.RVE.COM  
Certified as an Accredited Firm, 24 CA 10000000  
-ENGINEERING EXCELLENCE-



Outfalls in question, field verified by Berkeley Township DPW	06/25/2021
REVISIONS	DATE









Outfalls in question, field verified by Berkeley Township DPW	06/25/2021
REVISIONS	DATE



#### Legend

- Outfalls
- Stormwater Pipes (From County)
- Stormwater Points (From County)
  - Stormwater Structure
    - Anti-Seep Collar
    - Bubbler Basin
    - Cap
    - Cleanout
    - Connection
    - Outlet Control Structure
  - Unknown
  - Endwall
  - Headwall
  - Flared End Section (From County)
  - Berkeley Inlets (From County)
  - Stormsewer Manhole (From County)
- Blocks
- Grid
- Municipal Boundary
- Parcels
- Streams

Grid Section: F10  
Page 33 of 40

**General Notes and Data Sources:**

This Geographic Information System (GIS) Stormwater Outfall Mapping MS4 map is for demonstration purposes only, any use of this product with respect to accuracy and precision shall be the sole responsibility of the end user.

The areas, boundaries and details, shown on this map, are referenced, in part, from ground surveys, aerial surveys and recorded plans, tax assessment maps and as-built documents.

This map was created, in part, utilizing parcel, municipal boundary and location data provided by the Township of Berkeley, Stormwater assets, such as inlets, culverts, cleanouts, etc. were provided by the Township of Berkeley. Outfall locations verified by Berkeley Township Department of Public Works. Outfall locations were GPS field collected by Remington & Vernick Engineers utilizing the Trimble Geo-7X unit unless noted otherwise.

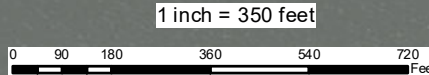
Additional GIS resource data and imagery data was provided by the New Jersey Geographic Information Network. The (NJGIN) data was obtained and provided by the New Jersey Geographic Information Network (NJGIN): [https://njin.state.nj.us/NJ\\_NUGINEexplorer/index.jsp](https://njin.state.nj.us/NJ_NUGINEexplorer/index.jsp). This secondary product has not been verified by (NJGIN) and is not state-authorized.

Additional cadastral feature mapping data, such as, waterways, roadways, railroads, aerial orthophotography, etc. was obtained from the New Jersey Department of Environmental Protection (NJDEP). The New Jersey Department of Environmental Protection (NJDEP) data was obtained and provided by the New Jersey Department of Environmental Protection: <http://www.state.nj.us/dep/gis/>. This secondary product has not been verified by (NJDEP) and is not state-authorized.

All positions are based on the following:

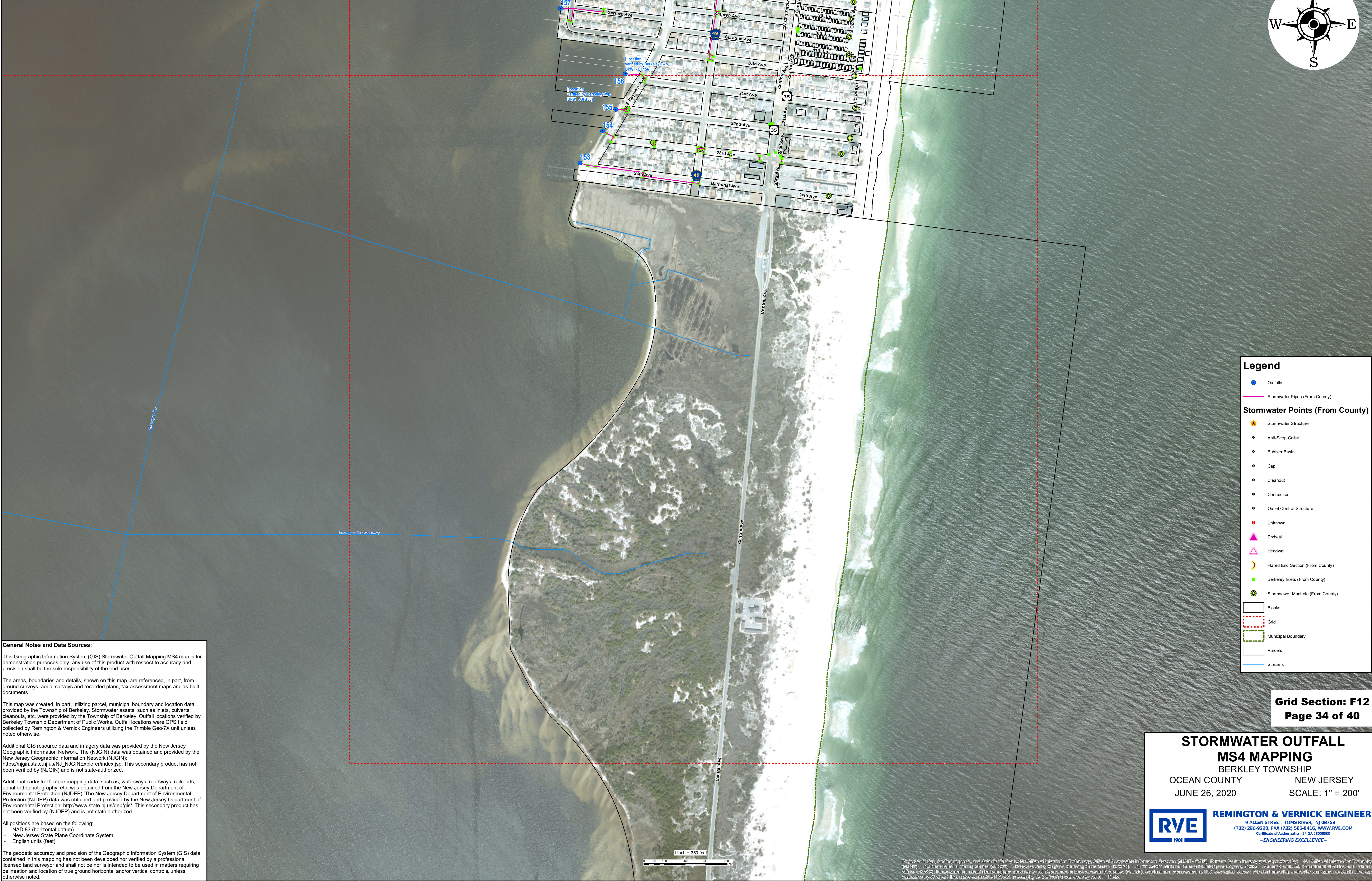
- NAD 83 (horizontal datum)
- New Jersey State Plane Coordinate System
- English units (feet)

The geodetic accuracy and precision of the Geographic Information System (GIS) data contained in this mapping has not been developed nor verified by a professional licensed land surveyor and shall not be nor is intended to be used in matters requiring delineation and location of true ground horizontal and/or vertical controls, unless otherwise noted.





Outfalls in question, field verified by Berkeley Township DPW	06/25/2021
REVISIONS	DATE



**General Notes and Data Sources:**

This Geographic Information System (GIS) Stormwater Outfall Mapping MS4 map is for demonstration purposes only, any use of this product with respect to accuracy and precision shall be the sole responsibility of the end user.

The areas, boundaries and details, shown on this map, are referenced, in part, from ground surveys, aerial surveys and recorded plans, tax assessment maps and as-built documents.

This map was created, in part, utilizing parcel, municipal boundary and location data provided by the Township of Berkeley. Stormwater assets, such as inlets, culverts, cleanouts, etc. were provided by the Township of Berkeley. Outfall locations verified by Berkeley Township Department of Public Works. Outfall locations were GPS field collected by Remington & Vernick Engineers utilizing the Trimble Geo-7X unit unless noted otherwise.

Additional GIS resource data and imagery data was provided by the New Jersey Geographic Information Network. The (NJGIN) data was obtained and provided by the New Jersey Geographic Information Network (NJGIN): [https://njin.state.nj.us/NJ\\_NJGINExplorer/index.jsp](https://njin.state.nj.us/NJ_NJGINExplorer/index.jsp). This secondary product has not been verified by (NJGIN) and is not state-authorized.

Additional cadastral feature mapping data, such as, waterways, roadways, railroads, aerial orthophotography, etc. was obtained from the New Jersey Department of Environmental Protection (NJDEP). The New Jersey Department of Environmental Protection (NJDEP) data was obtained and provided by the New Jersey Department of Environmental Protection; <http://www.state.nj.us/dep/gis/>. This secondary product has not been verified by (NJDEP) and is not state-authorized.

All positions are based on the following:

- NAD 83 (horizontal datum)
- New Jersey State Plane Coordinate System
- English units (feet)

The geodetic accuracy and precision of the Geographic Information System (GIS) data contained in this mapping has not been developed nor verified by a professional licensed land surveyor and shall not be nor is intended to be used in matters requiring delineation and location of true ground horizontal and/or vertical controls, unless otherwise noted.



**Legend**

●

Outfalls

—

Stormwater Pipes (From County)

★

Stormwater Structure

●

Anti-Sleep Collar

○

Bubbler Basin

○

Cap

●

Cleanout

●

Connection

●

Outlet Control Structure

■

Unknown

▲

Endwall

▲

Headwall

☾

Flared End Section (From County)

■

Berkeley Inlets (From County)

●

Stormsewer Manhole (From County)

□

Blocks

□

Grid

□

Municipal Boundary

□

Parcels

—

Streams

**Stormwater Points (From County)**

**Grid Section: F12**  
**Page 34 of 40**

**STORMWATER OUTFALL**  
**MS4 MAPPING**  
BERKELEY TOWNSHIP  
OCEAN COUNTY  
JUNE 26, 2020

NEW JERSEY

SCALE: 1" = 200'

**RVE**  
1901

**REMINGTON & VERNICK ENGINEERS**  
9 ALLEN STREET, TOMS RIVER, NJ 08753  
(732) 286-9220, FAX (732) 505-8436, [WWW.RVE.COM](http://WWW.RVE.COM)  
Certificate of Authorization: 24 CA 38003500  
—ENGINEERING EXCELLENCE—

Prepared, drafted, issued, revised, and data distribution by NJ Office of Information Technology, Office of Geographic Information Systems (NJGIT) - GIS. Funding for the legacy project provided by: NJ Office of Information Technology (NJGIT) - NJ Department of Transportation (NJDOT) - Gloucester County Regional Planning Commission (GCRPC) - NJ TRANSIT - National Geospatial-Intelligence Agency (NGA) - Mercer County NJ Department of Military and Veterans Affairs (NJDMVA) - Mercer County Administration (NJDMVA) - New Jersey Department of Environmental Protection (NJDEP), contractors and procurement by U.S. Geological Survey, (Principal mapping contractor was Quantum Spatial, Inc. Quality Assurance by Holtek Inc. under contract M-26-5, Processing by: WMS was done by WMS - 2020).

Document Path: P:\GIS Projects\NJ\Ocean County\Berkeley Township\15067099110.5\_Berkeley\_Stormwater\_Outfall\_Mapping\_MS4.mxd

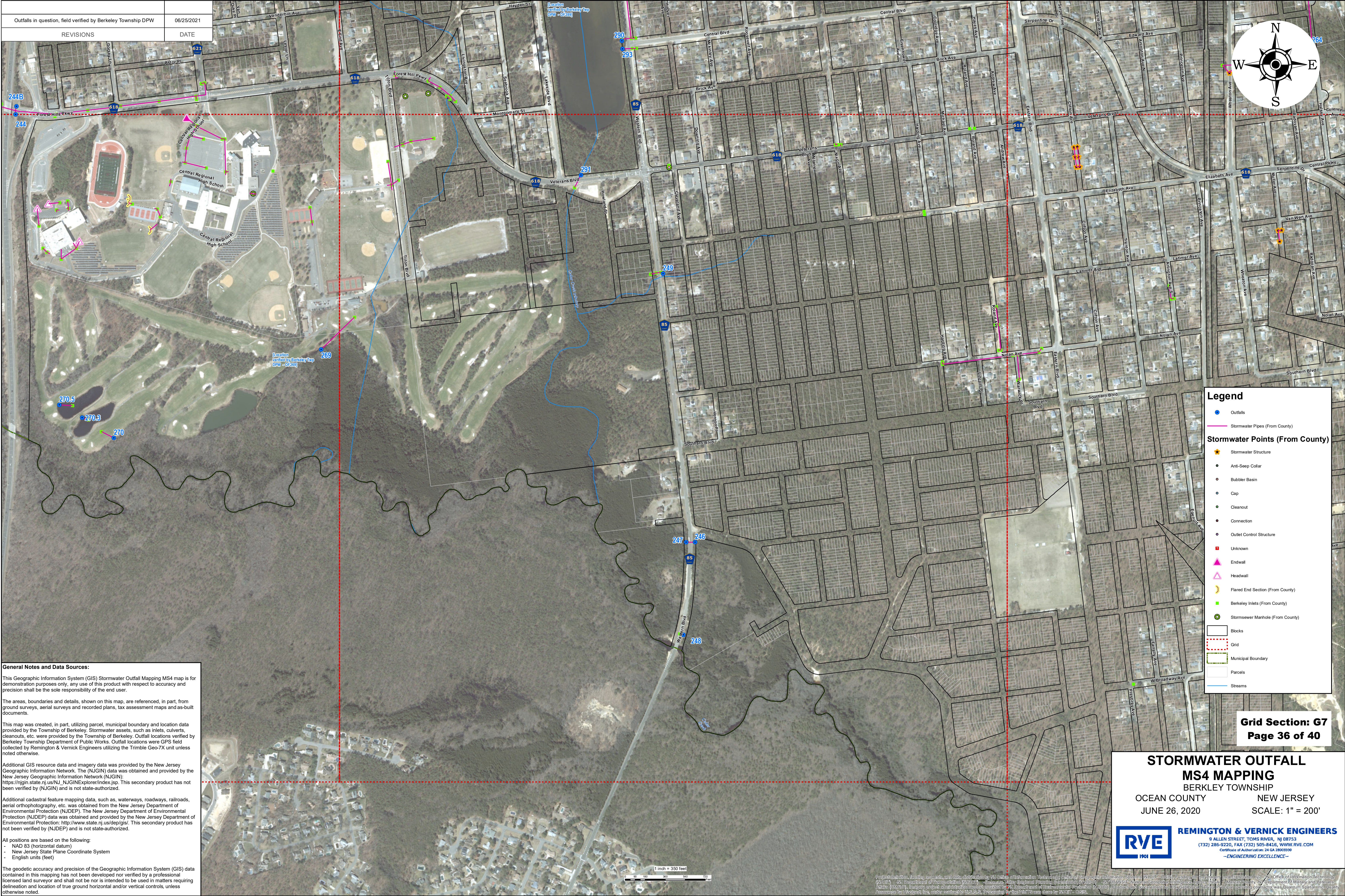


Outfalls in question, field verified by Berkeley Township DPW	06/25/2021
REVISIONS	DATE





Outfalls in question, field verified by Berkeley Township DPW	06/25/2021
REVISIONS	DATE



**General Notes and Data Sources:**

This Geographic Information System (GIS) Stormwater Outfall Mapping MS4 map is for demonstration purposes only, any use of this product with respect to accuracy and precision shall be the sole responsibility of the end user.

The areas, boundaries and details, shown on this map, are referenced, in part, from ground surveys, aerial surveys and recorded plans, tax assessment maps and as-built documents.

This map was created, in part, utilizing parcel, municipal boundary and location data provided by the Township of Berkeley. Stormwater assets, such as inlets, culverts, cleanouts, etc. were provided by the Township of Berkeley. Outfall locations verified by Berkeley Township Department of Public Works. Outfall locations were GPS field collected by Remington & Vernick Engineers utilizing the Trimble Geo-7X unit unless noted otherwise.

Additional GIS resource data and imagery data was provided by the New Jersey Geographic Information Network. The (NJGIN) data was obtained and provided by the New Jersey Geographic Information Network (NJGIN): [https://njin.state.nj.us/NJ\\_NGINExplorer/index.jsp](https://njin.state.nj.us/NJ_NGINExplorer/index.jsp). This secondary product has not been verified by (NJGIN) and is not state-authorized.

Additional cadastral feature mapping data, such as, waterways, roadways, railroads, aerial orthophotography, etc. was obtained from the New Jersey Department of Environmental Protection (NJDEP). The New Jersey Department of Environmental Protection (NJDEP) data was obtained and provided by the New Jersey Department of Environmental Protection: <http://www.state.nj.us/dep/gis/>. This secondary product has not been verified by (NJDEP) and is not state-authorized.

All positions are based on the following:

- NAD 83 (horizontal datum)
- New Jersey State Plane Coordinate System
- English units (feet)

The geodetic accuracy and precision of the Geographic Information System (GIS) data contained in this mapping has not been developed nor verified by a professional licensed land surveyor and shall not be nor is intended to be used in matters requiring delineation and location of true ground horizontal and/or vertical controls, unless otherwise noted.



Outfalls in question, field verified by Berkeley Township DPW	06/25/2021
REVISIONS	DATE



**General Notes and Data Sources:**

This Geographic Information System (GIS) Stormwater Outfall Mapping MS4 map is for demonstration purposes only, any use of this product with respect to accuracy and precision shall be the sole responsibility of the end user.

The areas, boundaries and details, shown on this map, are referenced, in part, from ground surveys, aerial surveys and recorded plans, tax assessment maps and as-built documents.

This map was created, in part, utilizing parcel, municipal boundary and location data provided by the Township of Berkeley, Stormwater assets, such as inlets, culverts, cleanouts, etc. were provided by the Township of Berkeley. Outfall locations verified by Berkeley Township Department of Public Works. Outfall locations were GPS field collected by Remington & Vernick Engineers utilizing the Trimble Geo-7X unit unless noted otherwise.

Additional GIS resource data and imagery data was provided by the New Jersey Geographic Information Network. The (NJGIN) data was obtained and provided by the New Jersey Geographic Information Network (NJGIN): [https://njin.state.nj.us/NJ\\_NJGINexplorer/index.jsp](https://njin.state.nj.us/NJ_NJGINexplorer/index.jsp). This secondary product has not been verified by (NJGIN) and is not state-authorized.

Additional cadastral feature mapping data, such as, waterways, roadways, railroads, aerial orthophotography, etc. was obtained from the New Jersey Department of Environmental Protection (NJDEP). The New Jersey Department of Environmental Protection (NJDEP) data was obtained and provided by the New Jersey Department of Environmental Protection: <http://www.state.nj.us/dep/gis/>. This secondary product has not been verified by (NJDEP) and is not state-authorized.

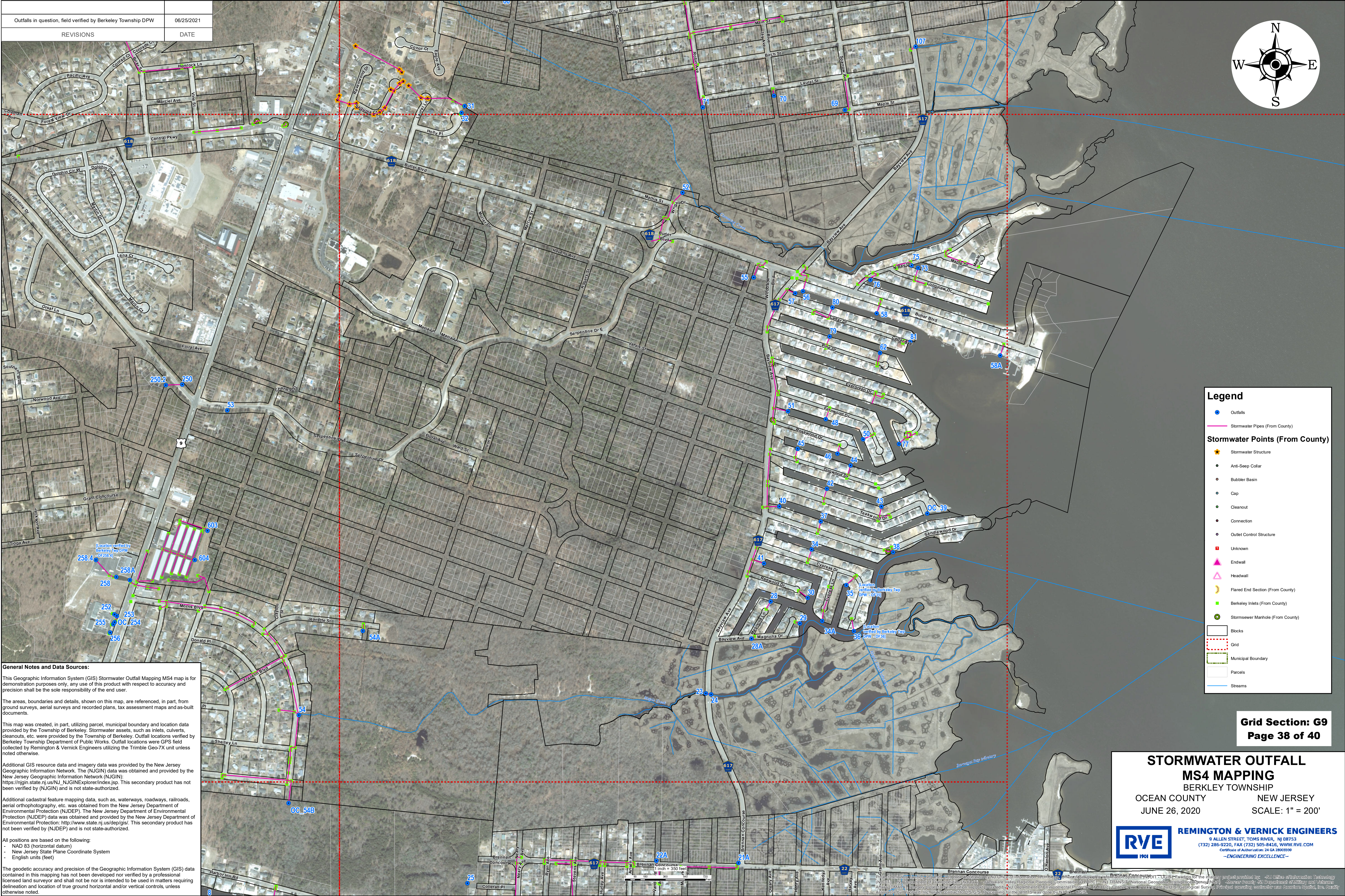
All positions are based on the following:

- NAD 83 (horizontal datum)
- New Jersey State Plane Coordinate System
- English units (feet)

The geodetic accuracy and precision of the Geographic Information System (GIS) data contained in this mapping has not been developed nor verified by a professional licensed land surveyor and shall not be nor is intended to be used in matters requiring delineation and location of true ground horizontal and/or vertical controls, unless otherwise noted.



Outfalls in question, field verified by Berkeley Township DPW	06/25/2021
REVISIONS	DATE



**General Notes and Data Sources:**

This Geographic Information System (GIS) Stormwater Outfall Mapping MS4 map is for demonstration purposes only, any use of this product with respect to accuracy and precision shall be the sole responsibility of the end user.

The areas, boundaries and details, shown on this map, are referenced, in part, from ground surveys, aerial surveys and recorded plans, tax assessment maps and as-built documents.

This map was created, in part, utilizing parcel, municipal boundary and location data provided by the Township of Berkeley, Stormwater assets, such as inlets, culverts, cleanouts, etc. were provided by the Township of Berkeley. Outfall locations verified by Berkeley Township Department of Public Works. Outfall locations were GPS field collected by Remington & Vernick Engineers utilizing the Trimble Geo-7X unit unless noted otherwise.

Additional GIS resource data and imagery data was provided by the New Jersey Geographic Information Network. The (NJGIN) data was obtained and provided by the New Jersey Geographic Information Network (NJGIN): [https://njin.state.nj.us/NJ\\_NJGINexplorer/index.jsp](https://njin.state.nj.us/NJ_NJGINexplorer/index.jsp). This secondary product has not been verified by (NJGIN) and is not state-authorized.

Additional cadastral feature mapping data, such as, waterways, roadways, railroads, aerial orthophotography, etc. was obtained from the New Jersey Department of Environmental Protection (NJDEP). The New Jersey Department of Environmental Protection (NJDEP) data was obtained and provided by the New Jersey Department of Environmental Protection: <http://www.state.nj.us/dep/gis/>. This secondary product has not been verified by (NJDEP) and is not state-authorized.

All positions are based on the following:

- NAD 83 (horizontal datum)
- New Jersey State Plane Coordinate System
- English units (feet)

The geodetic accuracy and precision of the Geographic Information System (GIS) data contained in this mapping has not been developed nor verified by a professional licensed land surveyor and shall not be nor is intended to be used in matters requiring delineation and location of true ground horizontal and/or vertical controls, unless otherwise noted.

### Legend

- Outfalls
- Stormwater Pipes (From County)
- Stormwater Points (From County)
- Stormwater Structure
  - Anti-Seep Collar
  - Bubbler Basin
  - Cap
  - Cleanout
  - Connection
  - Outlet Control Structure
  - Unknown
  - Endwall
  - Headwall
  - Flared End Section (From County)
  - Berkeley Inlets (From County)
  - Stormsewer Manhole (From County)
- Blocks
- Grid
- Municipal Boundary
- Parcels
- Streams

**Grid Section: G9**  
**Page 38 of 40**

## STORMWATER OUTFALL MS4 MAPPING BERKELEY TOWNSHIP

OCEAN COUNTY  
JUNE 26, 2020

NEW JERSEY  
SCALE: 1" = 200'



**REMINGTON & VERNICK ENGINEERS**  
9 ALLEN STREET, TOMS RIVER, NJ 08753  
(732) 286-9220, FAX (732) 505-8416, [WWW.RVE.COM](http://WWW.RVE.COM)  
Certificate of Authorization: 24 CA 3000390  
-ENGINEERING EXCELLENCE-



Outfalls in question, field verified by Berkeley Township DPW	06/25/2021
REVISIONS	DATE



**General Notes and Data Sources:**

This Geographic Information System (GIS) Stormwater Outfall Mapping MS4 map is for demonstration purposes only, any use of this product with respect to accuracy and precision shall be the sole responsibility of the end user.

The areas, boundaries and details, shown on this map, are referenced, in part, from ground surveys, aerial surveys and recorded plans, tax assessment maps and as-built documents.

This map was created, in part, utilizing parcel, municipal boundary and location data provided by the Township of Berkeley, Stormwater assets, such as inlets, culverts, cleanouts, etc. were provided by the Township of Berkeley. Outfall locations verified by Berkeley Township Department of Public Works. Outfall locations were GPS field collected by Remington & Vernick Engineers utilizing the Trimble Geo-7X unit unless noted otherwise.

Additional GIS resource data and imagery data was provided by the New Jersey Geographic Information Network. The (NJGIN) data was obtained and provided by the New Jersey Geographic Information Network (NJGIN): [https://nigin.state.nj.us/NJ\\_NJGINExplorer/index.jsp](https://nigin.state.nj.us/NJ_NJGINExplorer/index.jsp). This secondary product has not been verified by (NJGIN) and is not state-authorized.

Additional cadastral feature mapping data, such as, waterways, roadways, railroads, aerial orthophotography, etc. was obtained from the New Jersey Department of Environmental Protection (NJDEP). The New Jersey Department of Environmental Protection (NJDEP) data was obtained and provided by the New Jersey Department of Environmental Protection: <http://www.state.nj.us/dep/gis/>. This secondary product has not been verified by (NJDEP) and is not state-authorized.

All positions are based on the following:

- NAD 83 (horizontal datum)
- New Jersey State Plane Coordinate System
- English units (feet)

The geodetic accuracy and precision of the Geographic Information System (GIS) data contained in this mapping has not been developed nor verified by a professional licensed land surveyor and shall not be nor is intended to be used in matters requiring delineation and location of true ground horizontal and/or vertical controls, unless otherwise noted.



Outfalls in question, field verified by Berkeley Township DPW	06/25/2021
REVISIONS	DATE



**General Notes and Data Sources:**

This Geographic Information System (GIS) Stormwater Outfall Mapping MS4 map is for demonstration purposes only, any use of this product with respect to accuracy and precision shall be the sole responsibility of the end user.

The areas, boundaries and details, shown on this map, are referenced, in part, from ground surveys, aerial surveys and recorded plans, tax assessment maps and as-built documents.

This map was created, in part, utilizing parcel, municipal boundary and location data provided by the Township of Berkeley. Stormwater assets, such as inlets, culverts, cleanouts, etc. were provided by the Township of Berkeley. Outfall locations verified by Berkeley Township Department of Public Works. Outfall locations were GPS field collected by Remington & Vernick Engineers utilizing the Trimble Geo-7X unit unless noted otherwise.

Additional GIS resource data and imagery data was provided by the New Jersey Geographic Information Network (NJGIN). The (NJGIN) data was obtained and provided by the New Jersey Geographic Information Network (NJGIN): [https://njin.state.nj.us/NJ\\_NJGINexplorer/index.jsp](https://njin.state.nj.us/NJ_NJGINexplorer/index.jsp). This secondary product has not been verified by (NJGIN) and is not state-authorized.

Additional cadastral feature mapping data, such as, waterways, roadways, railroads, aerial orthophotography, etc. was obtained from the New Jersey Department of Environmental Protection (NJDEP). The New Jersey Department of Environmental Protection (NJDEP) data was obtained and provided by the New Jersey Department of Environmental Protection: <http://www.state.nj.us/dep/gis/>. This secondary product has not been verified by (NJDEP) and is not state-authorized.

All positions are based on the following:

- NAD 83 (horizontal datum)
- New Jersey State Plane Coordinate System
- English units (feet)

The geodetic accuracy and precision of the Geographic Information System (GIS) data contained in this mapping has not been developed nor verified by a professional licensed land surveyor and shall not be nor is intended to be used in matters requiring delineation and location of true ground horizontal and/or vertical controls, unless otherwise noted.

**Legend**

●

Outfalls

—

Stormwater Pipes (From County)

★

Stormwater Structure

●

Anti-Seep Collar

○

Bubbler Basin

○

Cap

●

Cleanout

○

Connection

○

Outlet Control Structure

■

Unknown

▲

Endwall

△

Headwall

☺

Flared End Section (From County)

■

Berkeley Inlets (From County)

●

Stormsewer Manhole (From County)

□

Blocks

□

Grid

□

Municipal Boundary

□

Parcels

—

Streams

**Grid Section: H9**

**Page 40 of 40**

**STORMWATER OUTFALL**

**MS4 MAPPING**

**BERKELEY TOWNSHIP**

**OCEAN COUNTY**

**JUNE 26, 2020**

**NEW JERSEY**

**SCALE: 1" = 200'**

**RVE**

1901

**REMINGTON & VERNICK ENGINEERS**

9 ALLEN STREET, TOMS RIVER, NJ 08753

(732) 286-9220, FAX (732) 505-8436, [WWW.RVE.COM](http://WWW.RVE.COM)

CERTIFICATE OF AUTHORIZATION: 24 CA 38003500

—ENGINEERING EXCELLENCE—